

SmartWay Overview



April 26, 2024



Office of the Administrator

Headquarters offices	
Office of Administration and Resources Management	Office of Air and Radiation
Chemical Safety and Pollution Prevention	Office of the Chief Financial Officer
Office of Enforcement and Compliance Assurance	Office of Environmental Information
Office of General Counsel	Office of Inspector General
Office of International and Tribal Affairs	Office of Research and Development
Office of Solid Waste and Emergency Response	Office of Water

Regional offices (around the nation)	
Region 1 / Boston	Region 2 / New York
Region 3 / Philadelphia	Region 4 / Atlanta
Region 5 / Chicago	Region 6 / Dallas
Region 7 / Kansas City	Region 8 / Denver
Region 9 / San Francisco	Region 10 / Seattle

Office of Air and Radiation

Office of Transportation and Air Quality (OTAQ)

202-566-0495

[About OTAQ](#)

- Assessment and Standards Division
- Compliance Division
- Transportation and Climate Division
- Testing and Advanced Technology Division

Transportation and Climate Division

Karl Simon, *Director*
Michael Moltzen, *DD*
Ken Yale, *Acting AD*

Climate Analysis and Strategies Center

Britney McCoy

Climate Economics and Modeling Center

Sharyn Lie

Legacy Fleet Incentives and Assessment Center

Christine Koester

SmartWay and Supply Chain Programs Center

Sam Waltzer

State Measures and Transportation Planning Center

Meg Patulski

Technology Assessment Center

Dennis Johnson

The work of OTAQ



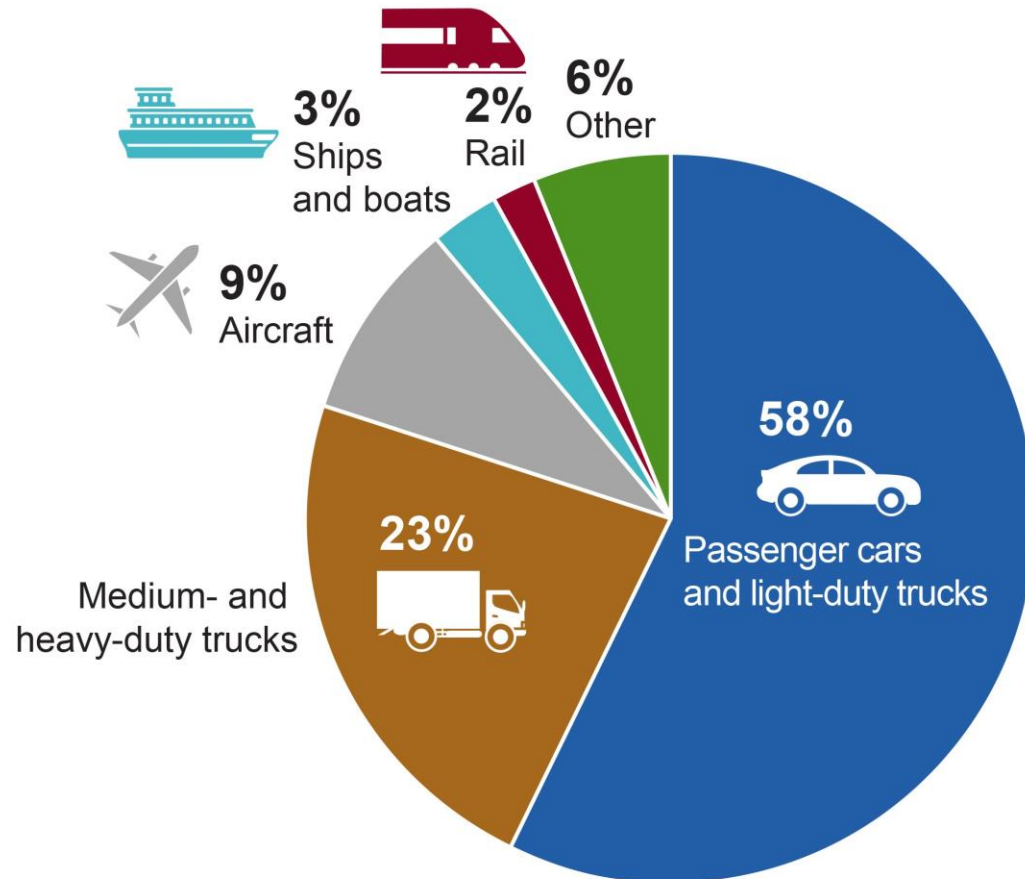
- Assess mobile source air quality problems and develop modeling tools to develop solutions, measure results, and support emission inventories.
- Establish national standards to reduce emissions from on-road and nonroad mobile sources.
- Implement national mobile source standards through certification processes and in-use monitoring.
- Develop fuel efficiency programs and technologies to reduce the emission of greenhouse gases from the transportation sector.
- Research, evaluate, and develop advanced technologies for controlling emissions, as well as new strategies for improving fuel efficiency.
- Develop partnerships and programs which inform stakeholders and the public about the benefits of cleaner transportation options and choices that protect public health.



Sustainability Drivers: Transportation Greenhouse Gases



2021 Greenhouse Gas Emissions from US Domestic Transportation by Mode



Transportation is now single greatest source of GHGs in U.S.

Between 1990 and 2021, transportation greenhouse gas emissions rose by **about 19%**.

This rise is mainly attributed to an increase in vehicle miles traveled by passenger cars and all truck types.

What is SmartWay?



 **Launched by freight industry in 2004 as a voluntary, market-based program aiming to:**

- Improve U.S. freight efficiency
- Enhance our Nation's energy security
- Reduce climate forcing and other air pollutants
- Highlight the freight industry's efforts to reduce emissions
- Provide a standardized benchmarking and reporting system

 **Adopted by Canada, piloted in Mexico and replicated around the globe**

 **About 4000 Carriers, Shippers, 3PL's and Affiliates**

- Key economic sectors and modes
- Small business, Owner-operators, Fortune 500 firms



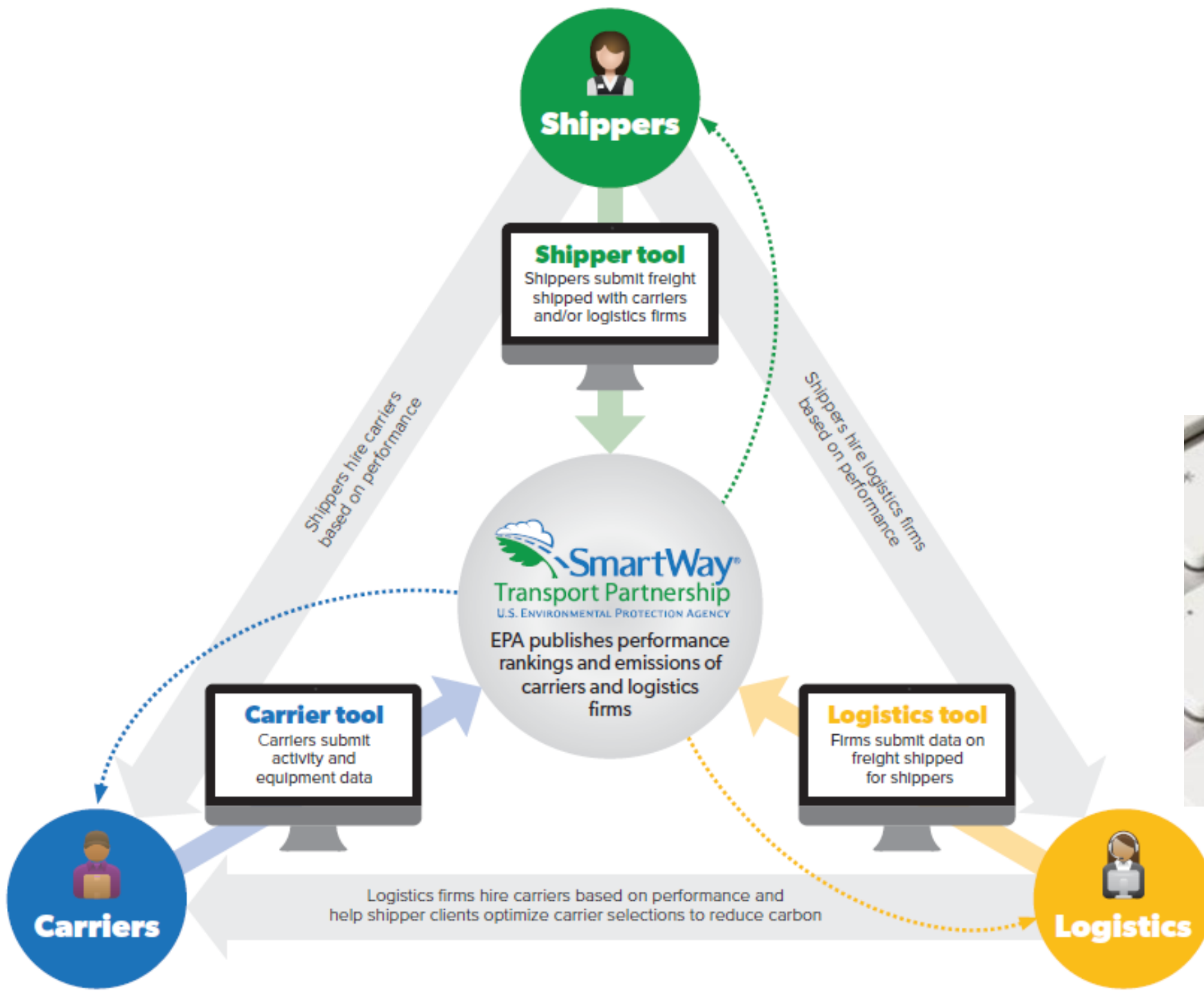
SmartWay Partner Results



- Since 2004, the number of companies that rely upon SmartWay has grown from 15 to over 4,000
- SmartWay Partners saved over \$52 billion in fuel costs and reduced harmful air pollutants by:
 - 162 million metric tons of CO₂
 - 2.8 million tons of NO_x
 - 114,000 tons of PM
- SmartWay Partner energy savings are equivalent to 379 million barrels of oil OR eliminating annual energy use in 24 million homes



SmartWay Benchmarking Process



SmartWay uses **Primary** activity data



- 🌿 Miles (revenue and empty)
 - 🌿 Fuel consumption
 - 🌿 Fuel types used (incl. EV)
 - 🌿 Short Haul vs. Long Haul
 - 🌿 Model year and truck class
 - 🌿 Average Payload – Cargo Weight Only
 - 🌿 Road Type
 - 🌿 Road Speed Categories
 - 🌿 Average Annual Idle Hours
- 🌿 Shippers and 3PLs do annual accounting of miles and ton-miles of freight shipped with SmartWay registered carriers and non-SmartWay carriers
- 🌿 Shippers and 3PLs report by mode, operation, subsidiary, etc.

Carrier Data = Emission Factors



13 Carrier Categories

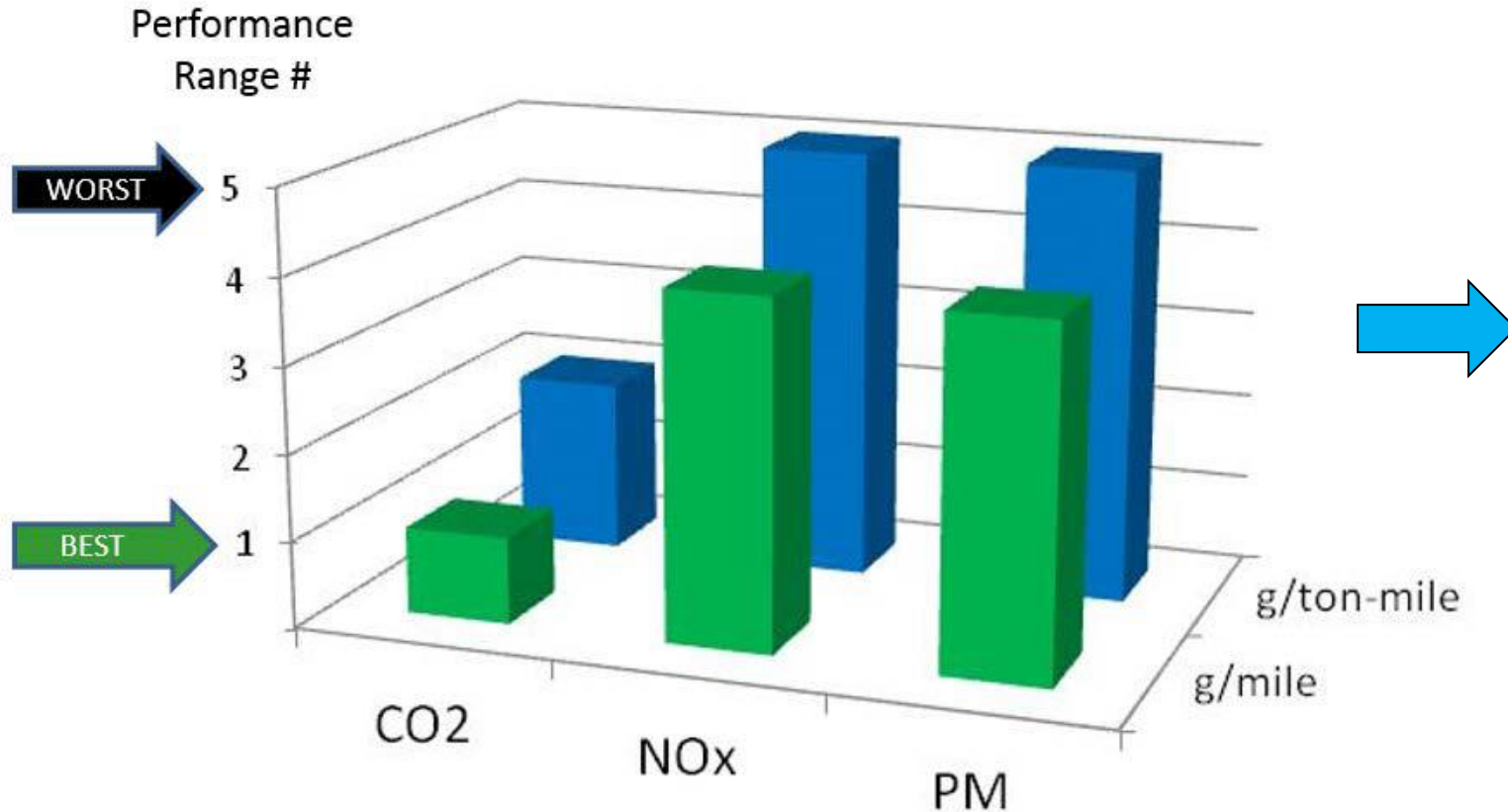
- TL, LTL, Refrigerated, Tanker, etc.

6 Emission Factors

- 2 metrics x 3 pollutants

Quintile Rankings

(ex: Truckload CO₂ g/mile)



Top 20% TL Dry Vans 600-1600 g/mile	• 1550 g/mile
Second 20% TL Dry Vans 1600-1700 g/mile	• 1650 g/mile
Middle 20% TL Dry Vans 1700-1800 g/mile	• 1750 g/mile
Fourth 20% TL Dry Vans 1800-1900 g/mile	• 1850 g/mile
Bottom 20% TL Dry Vans 1900-3600 g/mile	• 1950 g/mile

Published Carrier Performance Data



A		B		C		D		E		F		G		H		I		J		K		L		M		N		O		P		Q		R		S		T			
		Truck Carrier Data Year: 2018;		Barge Carrier Data Year: 2018;		Rail Carrier Data Year: 2018;		Multimodal Carrier Data Year: 2017;		Logistics Carrier Data Year: 2017;																															
Performance Rankings		TL/Dry Van																																							
Click down arrows to filter data by column categories. Select one or more items in the dropdown checklists.																																									
Note: g/m=grams/mile and g/tm=g/ton-mile																																									
Performance Rankings and Emission Factors																											Grams per Mile			Grams per Ton-mile											
Carrier Fleet Name	Mode	SmartWay Ranking	Fleet Category	Fleet Type	SCAC	MCN	US DO	Canadian NSC	g/m CO2	g/m CO2	g/m NOx	g/m NOx	g/m PM	g/m F	g/tm CO2	g/tm CO2	g/tm NOx	g/tm NOx	g/tm PM	g/tm PM	g/tm	g/tm	g/tm	g/tm	g/tm	g/tm	g/tm	g/tm	g/tm	g/tm	g/tm	g/tm	g/tm	g/tm	g/tm	g/tm	g/tm				
									Rank	Rank	Rank	Rank	Rank	Rank	Rank	Rank	Rank	Rank	Rank	Rank	Rank	Rank	Rank	Rank	Rank	Rank	Rank	Rank	Rank	Rank	Rank	Rank	Rank	Rank	Rank	Rank	Rank	Rank	Rank	Rank	Rank
101 Transport, Inc.	Truck		TL/Dry Van	For-Hire	OZOT	625894	1705392	N/A	4	1675	5	5.3	5	0.042	3	86.5	5	0.31	5	0.0026																					
1527530 Ontario Inc./M&M Carriers	Truck		TL/Dry Van	For-Hire	MNMR	N/A	1159500	142970520	2	1495	5	5.3	5	0.042	2	79.5	4	0.25	5	0.0026																					
1541335 Ontario Inc./Road Link Xpress	Truck		TL/Dry Van	For-Hire	ROAD	442882	1063823	143440740	5	1765	4	4.3	5	0.042	5	100.5	4	0.25	5	0.0026																					
1542300 Ontario Inc. dba ASR Transportation Inc.	Truck		TL/Dry Van	For-Hire	OFTT	442369	1057019	N/A	1	1405	2	2.3	2	0.018	1	72.5	2	0.13	2	0.0011																					
1628939 Ontario Ltd. o/a P&D Freightlines	Truck		TL/Dry Van	For-Hire	PDGH	521737	1360591	N/A	4	1675	2	2.3	2	0.018	5	100.5	2	0.13	2	0.0011																					
1st Express Inc.	Truck		TL/Dry Van	For-Hire	FSEP	181440	284589	N/A	2	1495	3	3.3	5	0.042	2	79.5	3	0.19	5	0.0026																					
2119118 Ontario Inc. DBA Triple G Trucking	Truck		TL/Dry Van	For-Hire	TPKB	957820	2859549	N/A	3	1585	5	5.3	5	0.042	2	79.5	4	0.25	5	0.0026																					
2210310 Ontario Inc./Dynamic Freight Haulers	Truck		TL/Dry Van	For-Hire	DFHR	691346	1937057	N/A	4	1675	4	4.3	5	0.042	3	86.5	4	0.25	5	0.0026																					
2241552 Ontario Inc / Skyway Carrier	Truck		TL/Dry Van	For-Hire	SWVC	N/A	200633	N/A	3	1585	3	3.3	2	0.018	4	93.5	3	0.19	2	0.0011																					
2322819 Ontario Inc./Right Service Right Choice	Truck		TL/Dry Van	For-		2294033	173-333-054	4	1675	3	3.3	5	0.042	2	79.5	3	0.19	4	0.0021																						
3NT, LLC.	Truck		TL/Dry Van	For-		2042543	N/A	4	1675	5	5.3	3	0.026	5	100.5	5	0.31	3	0.0016																						
5/D Express, Inc.: fdrp	Truck		TL/Dry Van	For-		1243083	N/A	5	1765	3	3.3	4	0.034	5	100.5	4	0.25	4	0.0021																						
6233317 Canada Inc. DBA Rockwell Truck Line	Truck		TL/Dry Van	For-Hire	RKWT	797845	2333669	148783160	1	1405	4	4.3	5	0.042	1	72.5	3	0.19	5	0.0026																					
9108-1950 Quebec inc dba Via Trans International	Truck		TL/Dry Van	Private	VTIL	471471	1175764	60331659	1	1405	1	1.3	1	0.01	1	72.5	1	0.07	1	0.0006																					
A & A Delivery LLC	Truck		TL/Dry Van	For-Hire	N/A	N/A	3013453	N/A	1	1405	1	1.3	1	0.01	5	100.5	3	0.19	5	0.0026																					
A&M Transport, LLC: Dry Van Fleet	Truck		TL/Dry Van	For-Hire	ALKM	217072	344894	N/A	3	1585	3	3.3	4	0.034	3	86.5	3	0.19	4	0.0021																					
A&R Express Lines, Inc.	Truck		TL/Dry Van	For-Hire					5	1765	2	2.3	2	0.018	5	100.5	2	0.13	2	0.0011																					
A&S Services Group, LLC	Truck		TL/Dry Van	For-Hire					2	1495	4	4.3	4	0.034	5	100.5	5	0.31	5	0.0026																					
A.C. Trucking, Inc.: 12073707	Truck		TL/Dry Van	For-Hire					4	1675	3	3.3	3	0.026	1	72.5	3	0.19	2	0.0011																					
A.D. Transport Express, Inc.	Truck		TL/Dry Van	For-Hire	AJXK	195625	0269605	N/A	3	1585	3	3.3	2	0.018	5	100.5	3	0.19	2	0.0011																					
A.N. Webber, Inc.	Truck		TL/Dry Van	For-Hire	WANQ	147008	76507	N/A	3	1585	3	3.3	3	0.026	2	79.5	2	0.13	2	0.0011																					
A/T Transportation, LLC.	Truck		TL/Dry Van	For-Hire	AUCR	N/A	1486485	N/A	2	1495	2	2.3	3	0.026	4	93.5	2	0.13	3	0.0016																					
AC Leasing Company Inc.	Truck		TL/Dry Van	For-Hire	ACWH	156691	264128	N/A	3	1585	4	4.3	5	0.042	1	72.5	3	0.19	5	0.0026																					
ACS Logistics Transportation Inc.	Truck		TL/Dry Van	For-Hire	OFNS	548067	1450334	129295853	5	1765	4	4.3	5	0.042	4	93.5	4	0.25	5	0.0026																					
AGM Transport Inc	Truck		TL/Dry Van	For-Hire	AGMP	479749	1204798	N/A	1	1405	1	1.3	3	0.026	4	93.5	1	0.07	3	0.0016																					
AGX Freight Carriers, LLC	Truck		TL/Dry Van	For-Hire	APXY	642324	1755933	N/A	4	1675	5	5.3	5	0.042	4	93.5	5	0.31	5	0.0026																					
ALB Express Inc.	Truck		TL/Dry Van	For-Hire	ALBK	803750	2348464	N/A	5	1765	2	2.3	2	0.018	3	86.5	1	0.07	2	0.0011																					
ALTL Inc	Truck		TL/Dry Van	For-Hire	ALLM	154127	169025	N/A	2	1495	1	1.3	2	0.018	2	79.5	1	0.07	1	0.0006																					
AM International (TFI 11, S.E.C.): AM International	Truck		TL/Dry Van	Dedicate	AMJO	488546	1257162	61668976	5	1765	2	2.3	2	0.018	2	79.5	2	0.13	1	0.0006																					
AMC Express, Inc.	Truck		TL/Dry Van	For-Hire	AMCM	789656	2313051	N/A	5	1765	5	5.3	5	0.042	3	86.5	5	0.31	5	0.0026																					
ARD Express Inc.	Truck		TL/Dry Van	For-Hire	ARXK	588686	1590621	N/A	3	1585	5	5.3	5	0.042	3	86.5	5	0.31	5	0.0026																					
ASL Transportation Group, Inc.	Truck		TL/Dry Van	For-Hire	AXGN	644828	1764745	N/A	2	1495	2	2.3	2	0.018	2	79.5	2	0.13	2	0.0011																					
AT & R Transport	Truck		TL/Dry Van	Private	AYAE	830510	2412919	N/A	1	1405	4	4.3	3	0.026	1	72.5	3	0.19	3	0.0016																					
ATS 1, Inc.	Truck		TL/Dry Van	For-Hire	AQTS	767159	2210783	N/A	3	1585	1	1.3	2	0.018	5	100.5	3	0.19	4	0.0021																					
ATC INC	Truck		TL/Dry Van	For-Hire	AQSM	366236	666236	N/A	1	1405	1	1.3	1	0.01	5	70.5	1	0.07	1	0.0006																					

Bin rankings

Emission factors

SmartWay aligned with ISO 14083, WRI GHGP and GLEC



		? This tool has been reviewed by The World Resource Institute for conformance	
Public Disclosure Report		Report generated on: 10/22/2018	
Tool: Shipper		Data Year: 2017	
Partner: Let Me Count The Ways Shipping			
Inventory Period:		January 1, 2017 to December 31, 2017	
Scope 3 Category		CO₂ Emissions (metric tonnes)	Percent of emissions calculated using data from SmartWay carriers (%)
Category #4 - Upstream Transportation and Distribution		350,378.7	82.39%
Emissions of biogenic CO₂ (metric tonnes):		7,150.6	
Category #4 - Upstream Transportation and Distribution			

Mandatory Reporting

- USEPA does NOT require GHG reporting from the transport sector (freight or passenger)
- CA SB253 - Climate Corporate Data Accountability Act
- CA SB261 Greenhouse gases: Climate-Related Financial Risk
- SEC Enhancement and Standardization of Climate-Related Disclosures

California SB-253 and SB-261

A Snapshot of California's New Climate Disclosure Regulations



Navigating the SEC's Proposed Climate Rule:

Governance Disclosure of Climate-Related Risks



CA SB253 and SB261



- SB253 requires companies with **greater than \$1 billion annual revenue** to annually report their **Scope 1, 2 and 3 GHG emissions**.
- “Reporting entities” include publicly traded firms and private firms
- Starting in **2026**, reporting entities must annually report **Scope 1 and Scope 2 GHG emissions** from the prior fiscal year.
- Starting in **2027**, they must report **Scope 3 GHG emissions** indirect upstream and downstream supply-chain emissions from the prior fiscal year.
- GHG reports must **conform to the GHG Protocol**
- SB261 requires starting in **2026**, entities with annual revenues of **\$500 million** to disclose climate-related financial risks pursuant to the TCFD and measures taken to mitigate/adapt to these risks.
- Implementing regulations and reporting guidance will be forthcoming for SB253 and SB261



Takeaways



SmartWay provides:

- Total mass CO₂ freight emissions (plus NO_x, PM, BC) for US and Canada (Mexico TBD)
- Total mass emissions per mode
- Emission intensity factors (g/mile and g/ton-mile)
- Emission intensity factors per mode
- Tank to Wheel emissions (studying incorporating WTT)
- Tracking and reporting by business unit or subsidiary
- Annual reporting cycle based on prior calendar year activity
- Scope 1 and 2 data reports for carriers and Scope 3 data for shippers and 3PLs
- Publicly accessible data sets
- EPA as neutral third-party facilitating data exchange between Carriers, 3PLs, and Shippers
- Data that firms are using in their CDP, GRI, CSR and other public disclosure reporting
- Aligned with prevailing global frameworks and methodologies



www.epa.gov/smartway

smartway_transport@epa.gov

SmartWay Helpline

734-214-4767