

DRIVERS

Implementation in the Philippines

Supporting Traffic Safety Information System in Southeast Asia

United Nations Conference Centre

Bangkok, Thailand

Quality Infrastructure
Investment Partnership

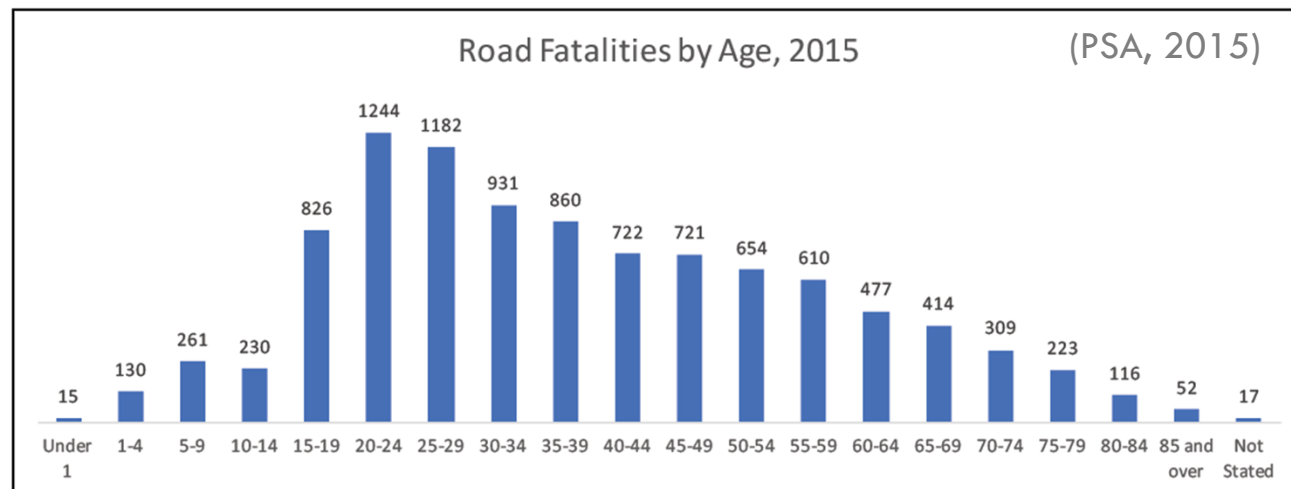


Bloomberg
Philanthropies



ROAD CRASH IN THE PHILIPPINES

- **30 recorded fatality per day** (PSA, 2016)
- Majority are **5- 29 year olds**
- Most fatalities involve: **53% Motorcycles** and **19% Pedestrians** (DPWH, 2013)



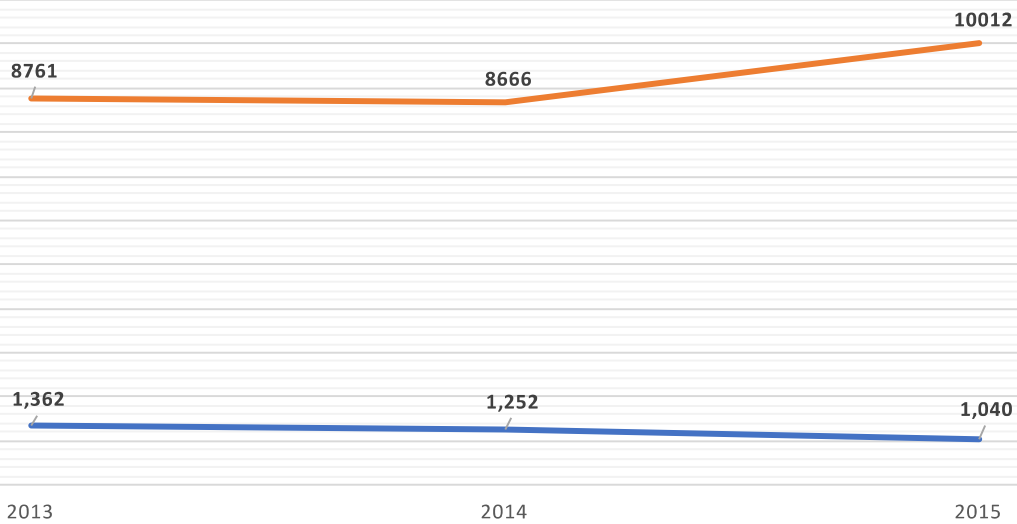
UNDERREPORTING

Percentage of Underreporting in Selected Countries

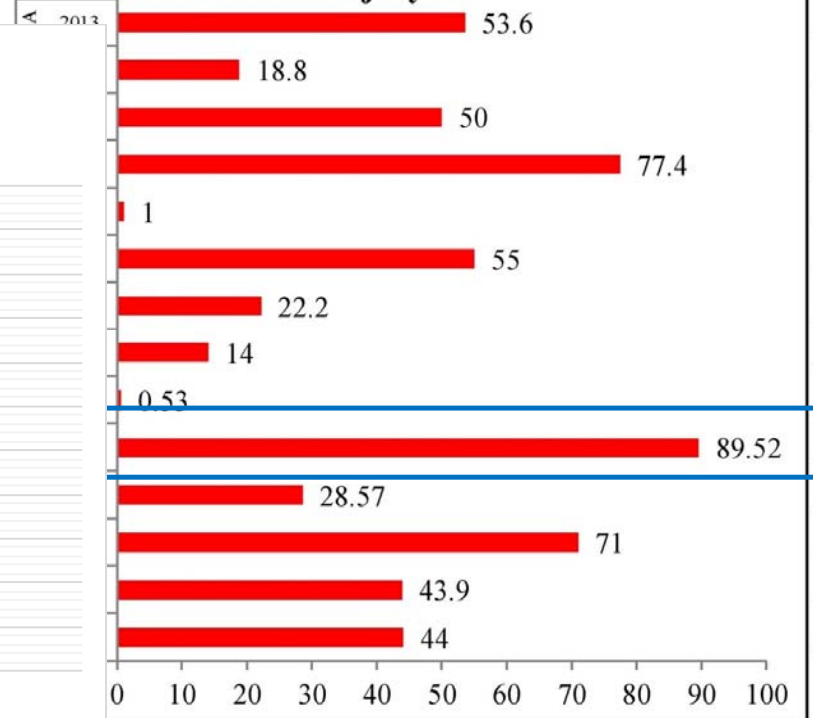
(Sigua and Palmiano, 2005)

Crash Fatalities in the Philippines, 2013 to 2015

— Fatalities (PNP, 2015) — Fatalities (PSA, 2015)

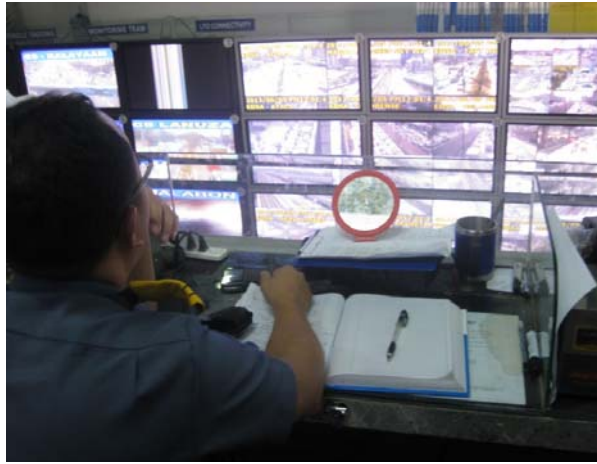
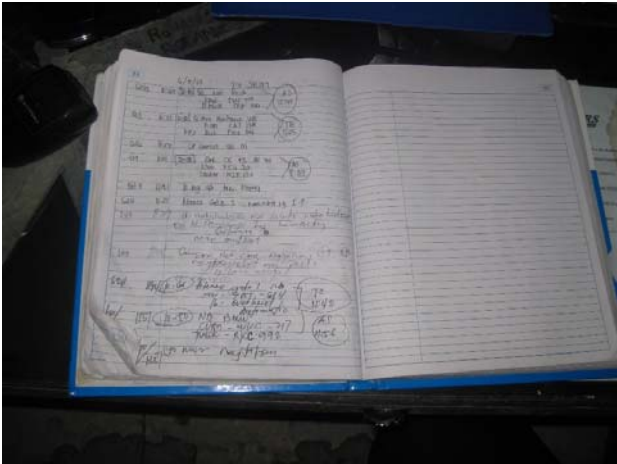


Fatal Injury Accidents



% Underreporting

Manually Recorded

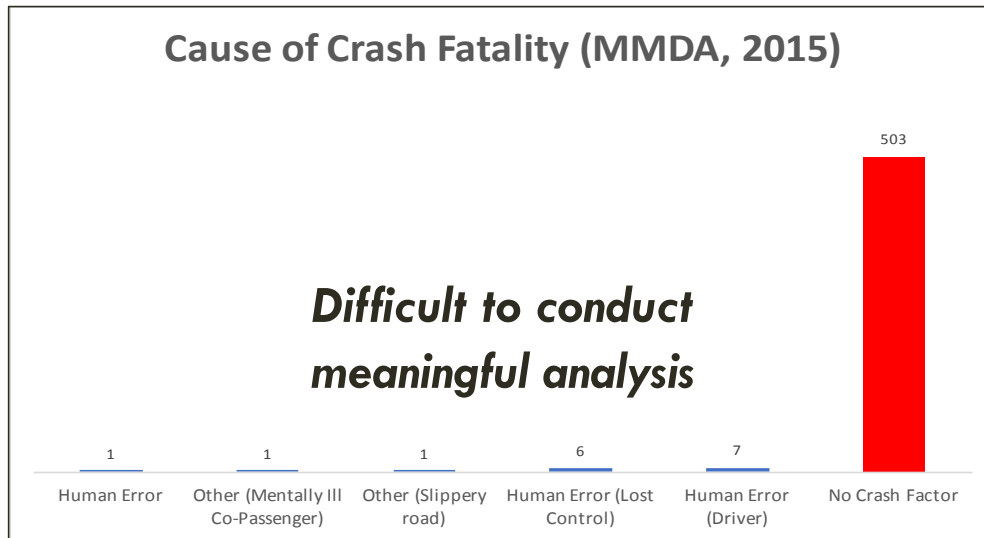


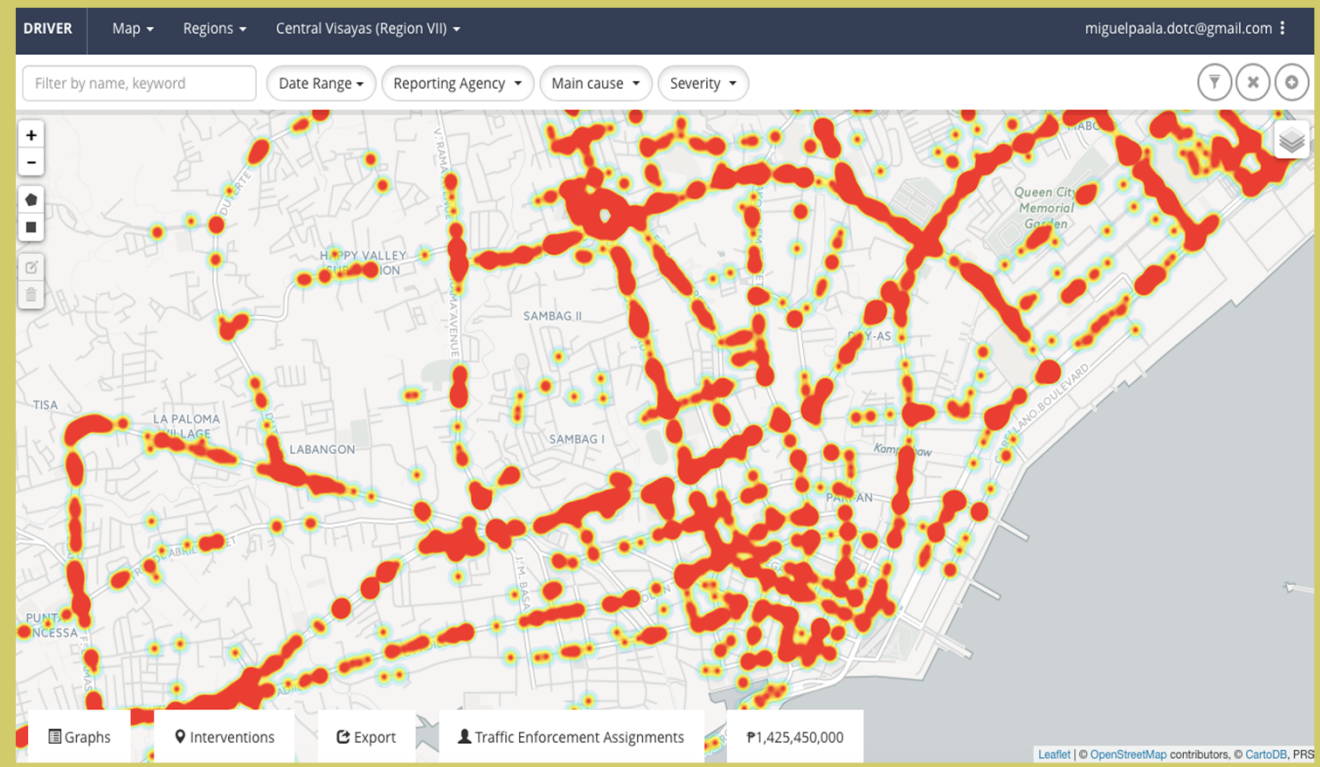
Multiple Sources



Cause of Crash Fatality (MMDA, 2015)

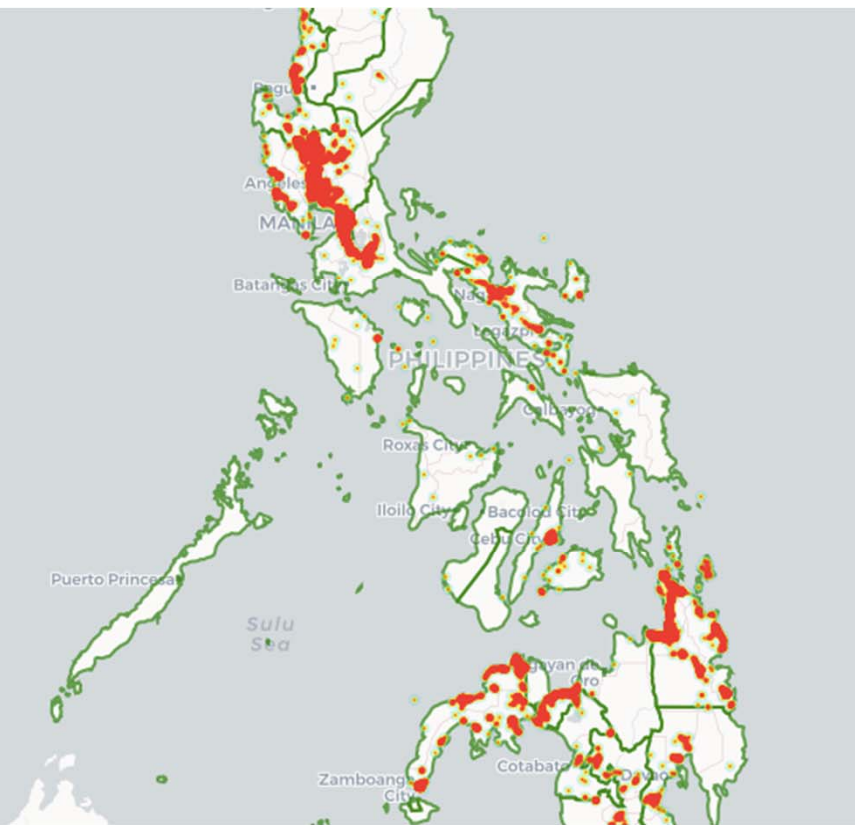
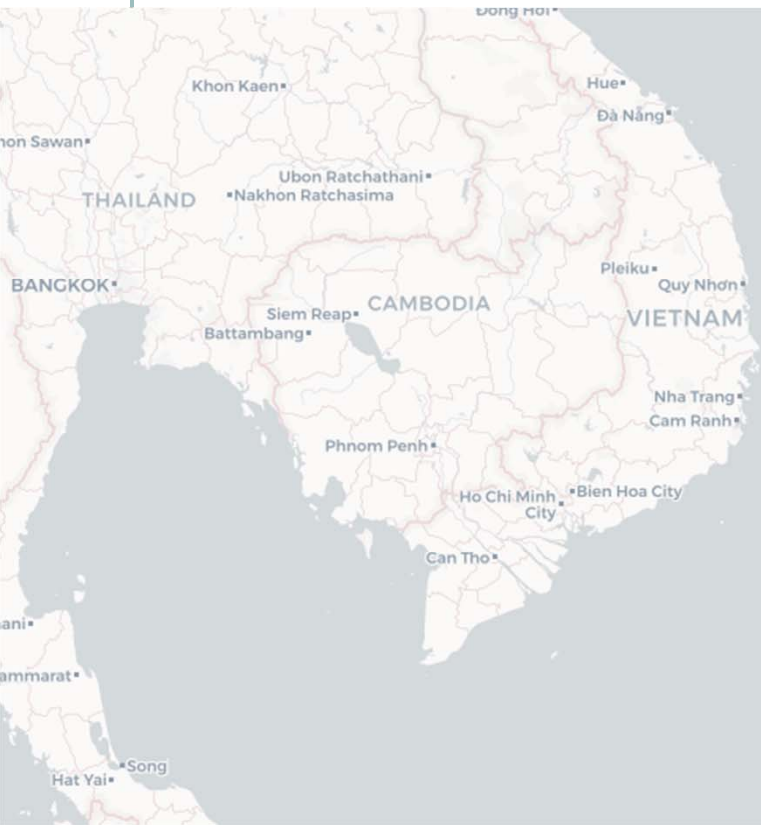
Difficult to conduct meaningful analysis



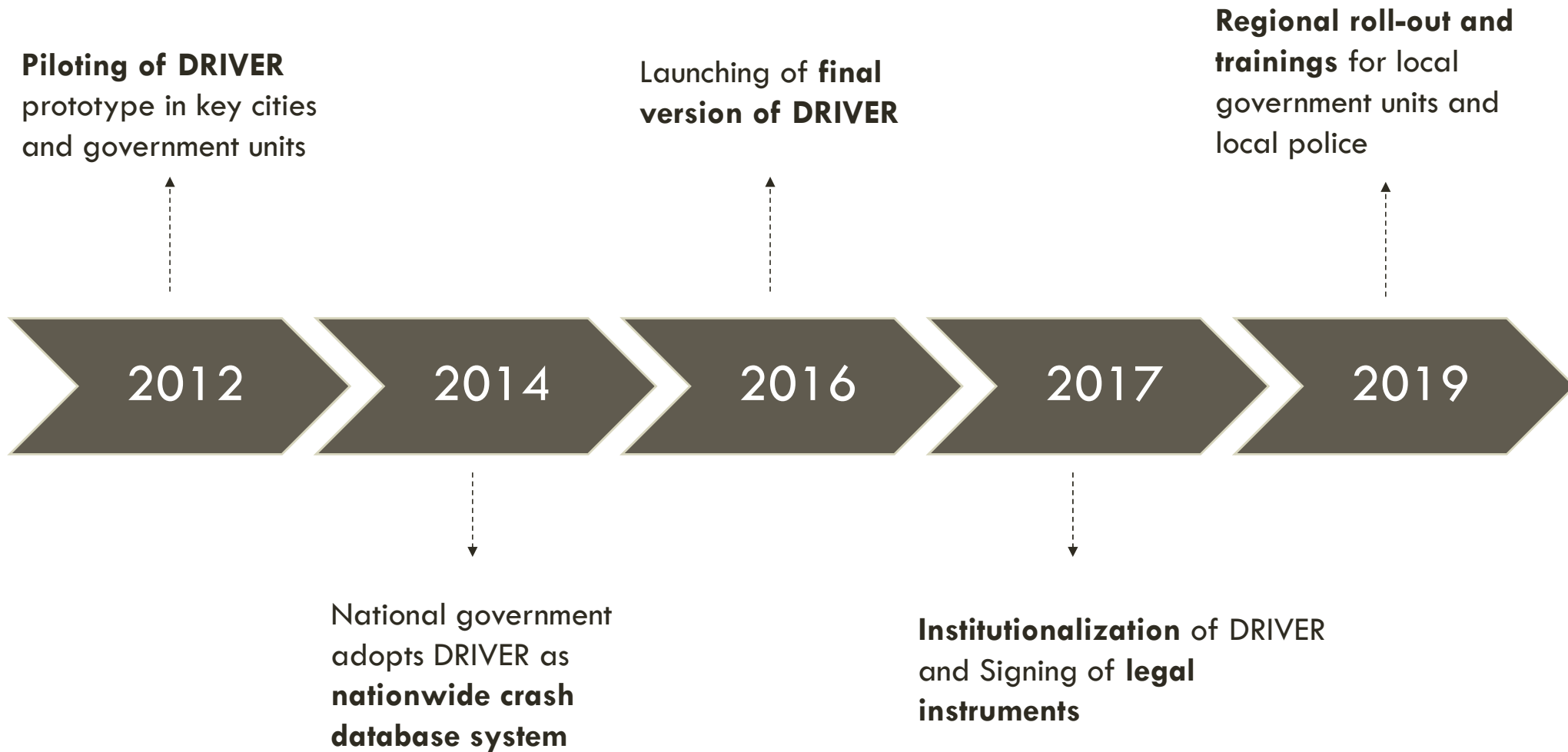


DRIVERS

ROADSAFETY.GOV.PH



DRIVERS IN THE PHILIPPINES: BRIEF HISTORY



DASHBOARD

DRIVER

Dashboard ▾

Regions ▾

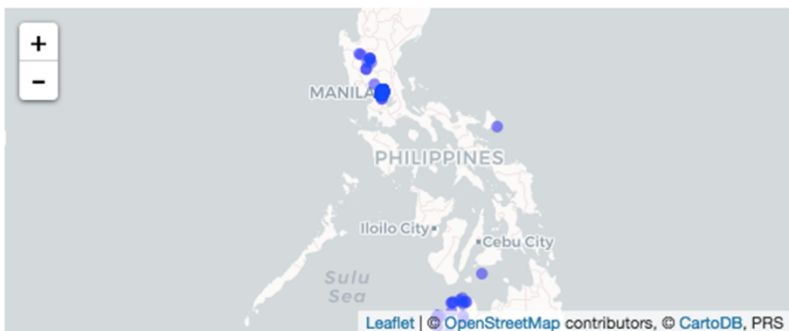
All ▾

miguelpaala@gmail.com ⋮



Black Spots by Severity

Analyze & filter »



Incidents: Last Two Weeks

View all incidents »

₱2,733,320,00

Total economic loss and societal harm: Last 90 days

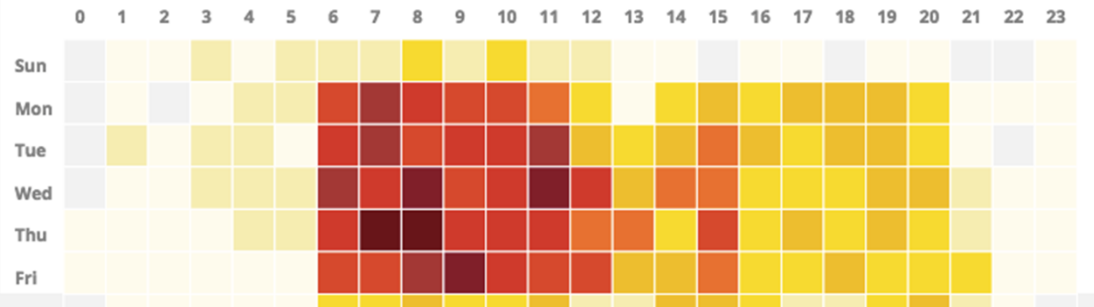
1141

Incidents

30 Days

90 Days

365 Days



Saved Filters

Pasig River Bike Fatalities

Vehicle type: Bicycle

View »

Pasig River Bike

Vehicle type: Bicycle

View »

MAP

DRIVER Map ▾ Regions ▾ All ▾ miguelpaala@gmail.com ⋮

Filter by name, keyword Date Range ▾ Vehicle type ▾ Severity ▾ Reporting Agency ▾ Main cause ▾ **Adding Records, Saving Filters** [Map Controls]

Spatial Filters **Filters** **Layers**

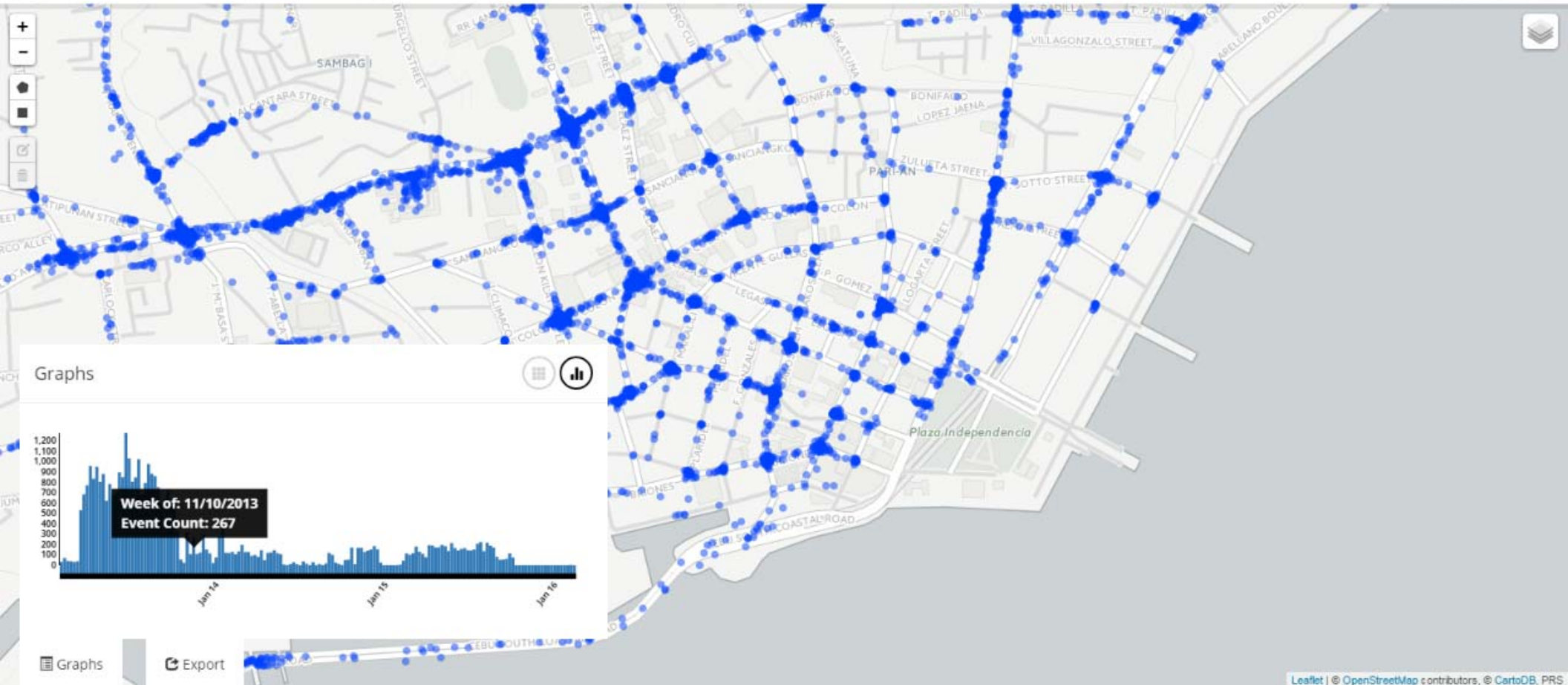
Graphs **Interventions** **Reports** **Assignments** **Economic Cost**

[Graphs] [Interventions] [Export] [Traffic Enforcement Assignments] ₱29,792,050,000

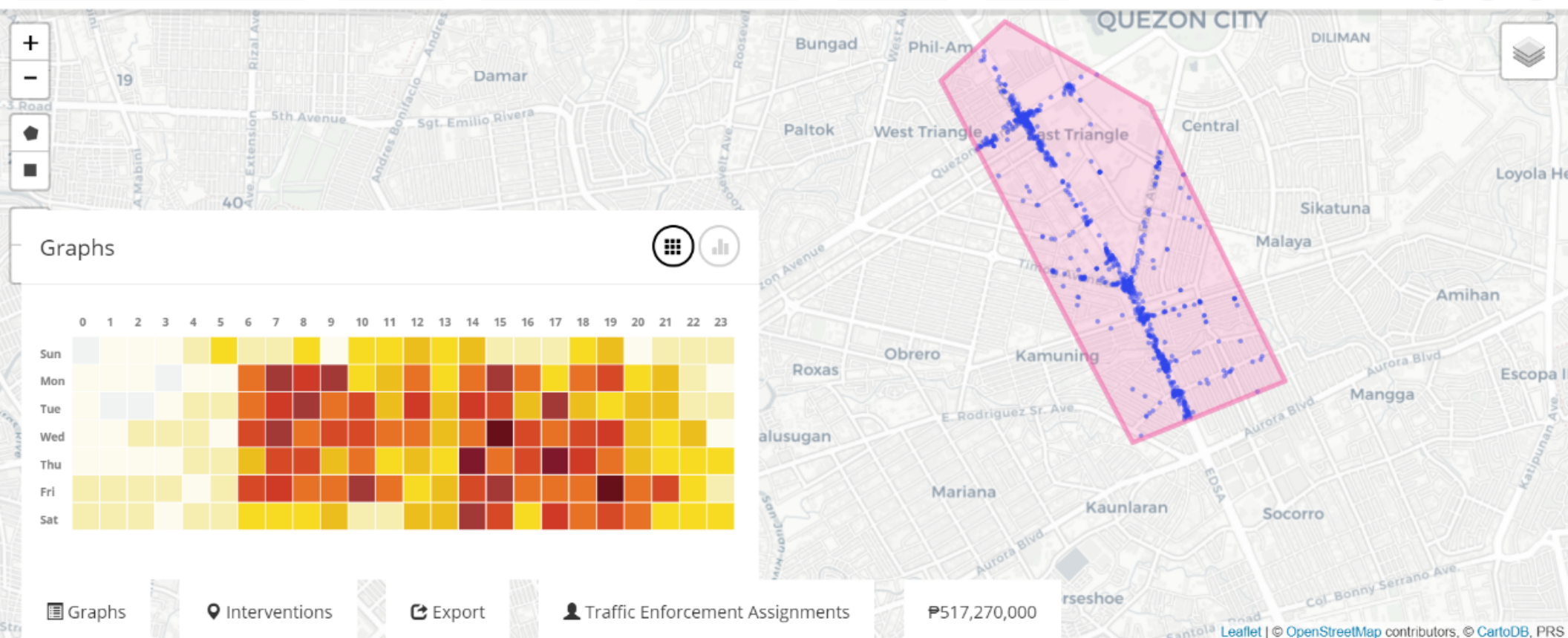
Leaflet | © OpenStreetMap contributors, © CartoDB, PRS



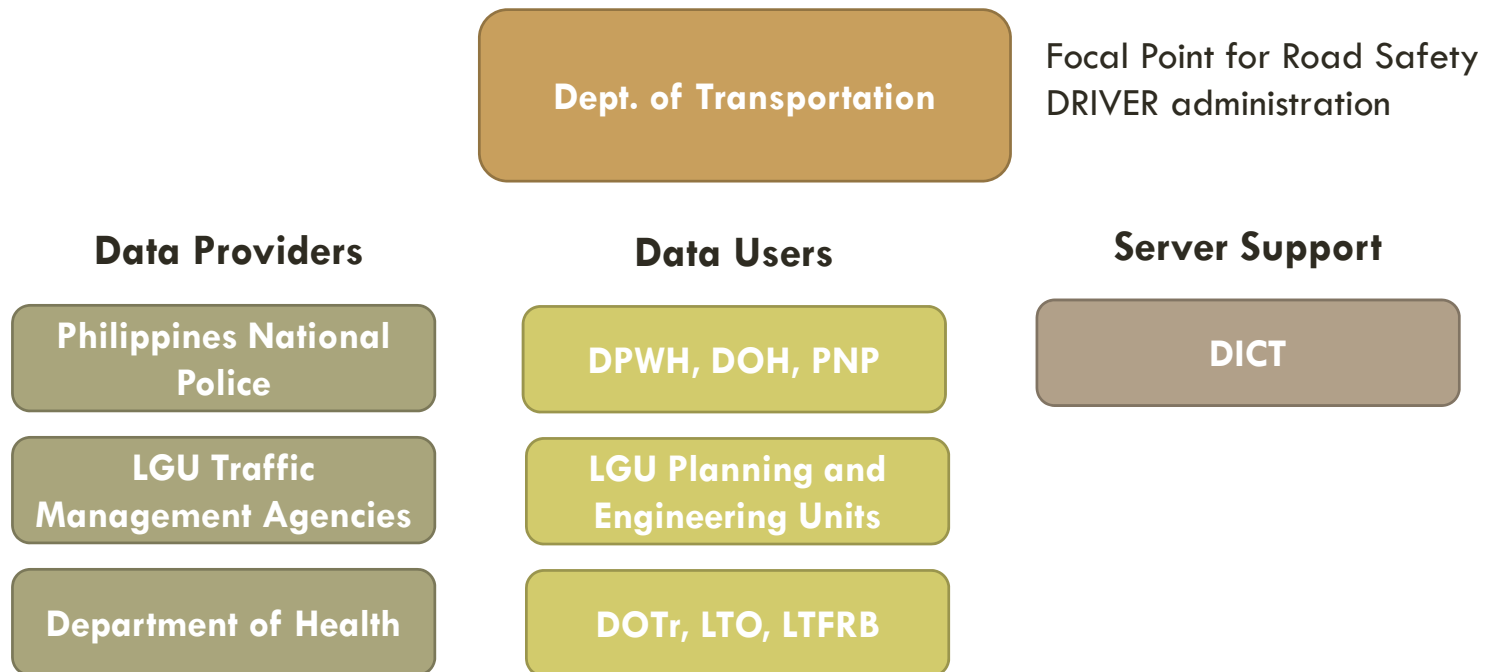




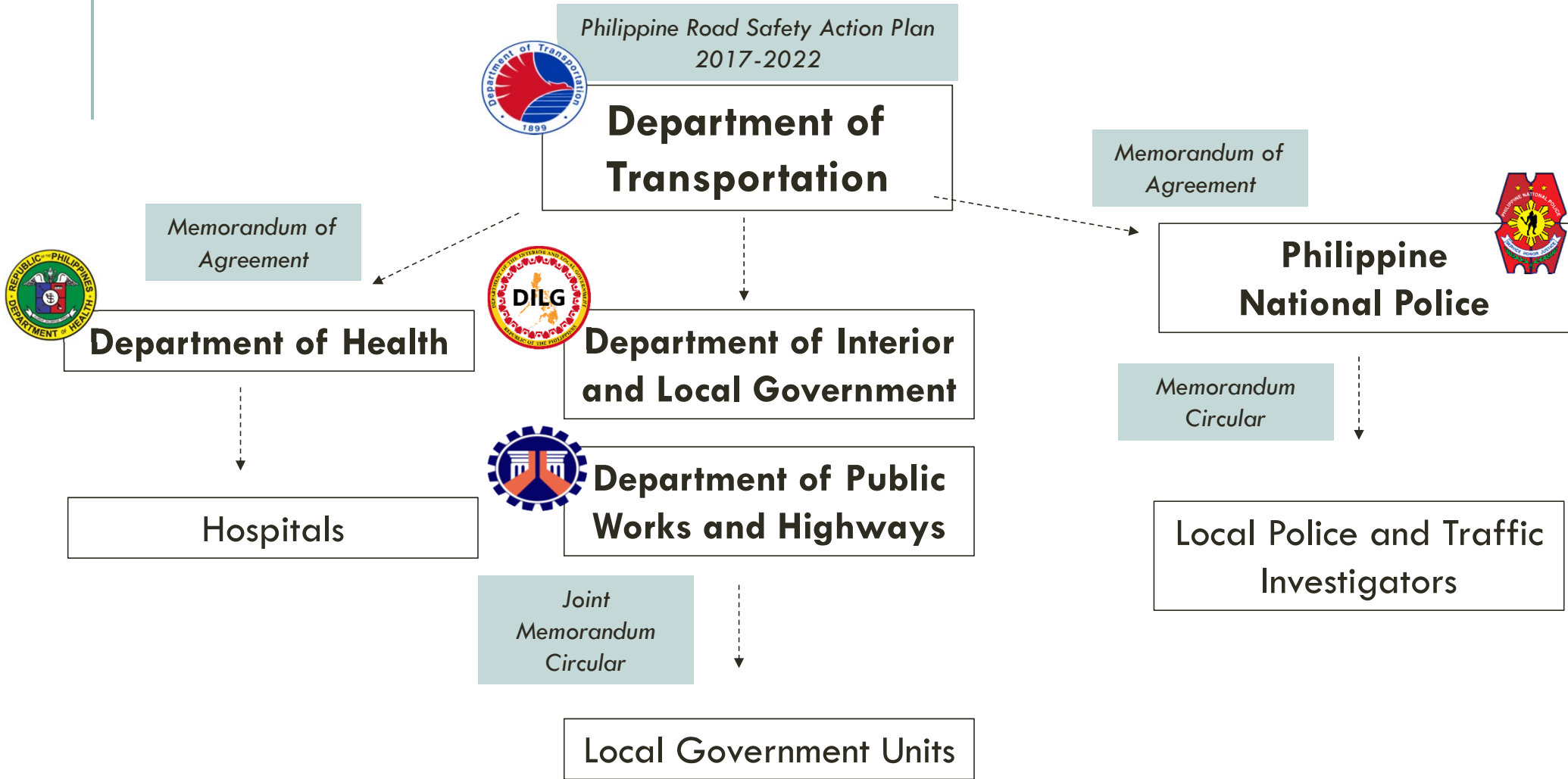
Filter by name, keyword Date Range Vehicle type Reporting Agency Main cause Severity



INSTITUTIONAL ARRANGEMENT



SUSTAINABILITY OF DRIVER USAGE





TRAININGS

HANDOUTS

STEP 5: KUMPLETUHIN ANG FORM

Incident Input Form

5a. Ilagay ang lokasyon ng insidente at hintayin na lumabas ang mga mungkahing address. Halimbawa: Kung ang lokasyon ay may "Rizal" sa address, magbibigay si DRIVERS ng listahan ng lahat ng address na may "Rizal"

5b. Pumili ngayon sa listahan para sa eksaktong address.

5c. Kung walang lumilitaw sa listahan, subukan ang iba't ibang bahagi ng address (street o building o lungsod o barangay o probinsya o kalapit na landmark). Magbabago ang mapa sa tuwing pipili ng address mula sa mungkahing mga lugar. Kailangan na lamang iusog sa itapat ang pin sa eksaktong lugar sa mapa.

5d. Kung wala pa ring listahan, alamin ang latitude/longitude ng address mula

5e. Kusang lilitaw ang "Latitude," "Longitude," "Weather," at "Light" base kung saan nakapin ang insidente sa mapa.

5f. Punan ang mga detalye base sa police



The incident input form will appear again. Details of the incident may be edited and deleted from here.

To delete an incident, click the "Delete Incident" button on the right.

Escalating Interventions
Interventions are actions made by Analysts in order to alleviate a road incident. These may come in the form of disciplinary action, road safety precautions, and the like.

To add an intervention, analysts must first go to the Map and click the "Intervention" tab found below.

Clicking on this will prompt the "Add Intervention" button to appear. Click this:



Editing & Deleting Interventions
Just like editing incidents, clicking on a pinned intervention on the map will show an "Edit" button. Interventions may be edited and deleted in the same way.

Email request for Analyst access and other questions at roadsafetydotr@gmail.com

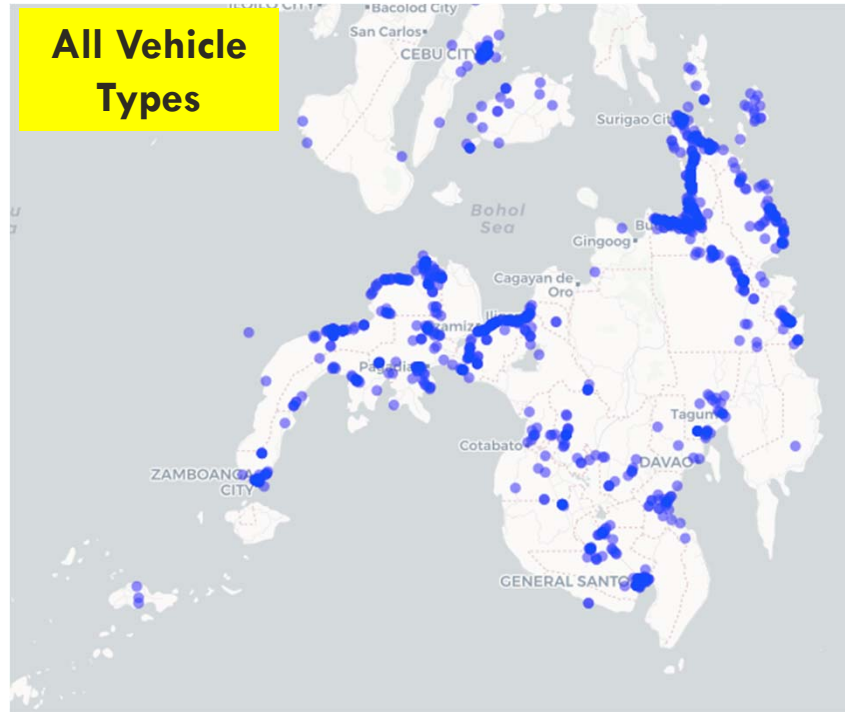
CONTACT US
DRIVERS 0917-123-4567
Email: roadsafetydotr@gmail.com

View the full DRIVER manual on www.roadsafety.ph
Visit the DRIVER application on www.roadsafety.gov.ph

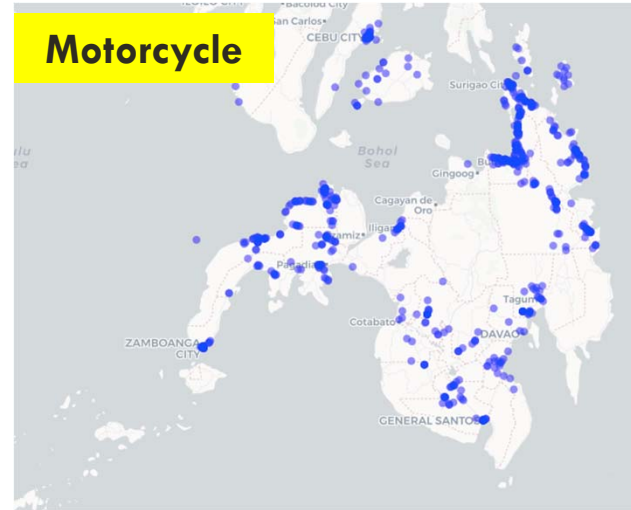
DRIVER
Quick Guide for Analysts
www.roadsafety.gov.ph

DRIVER is a web application aimed at improving road safety reporting and data analysis. It provides data entry tools, map interfaces, custom report and filter tools, multiple concurrent user editing, and data exports.

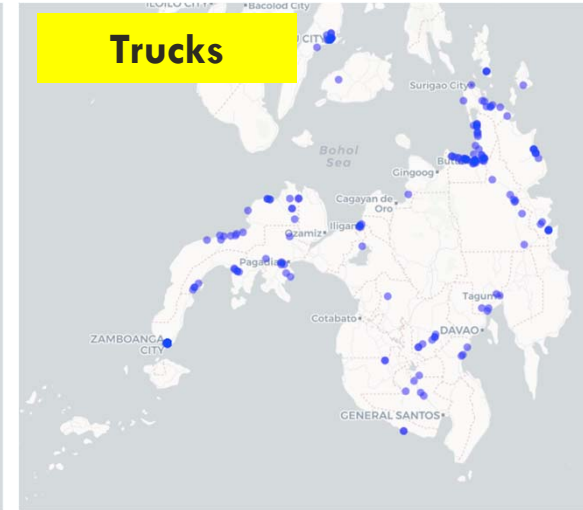
**All Vehicle
Types**



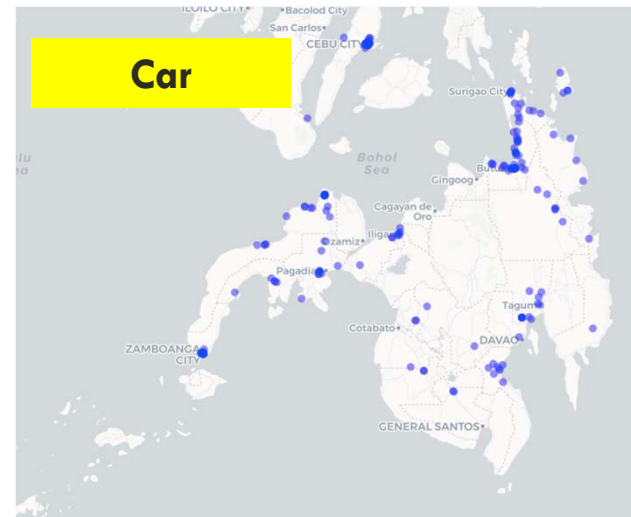
Motorcycle



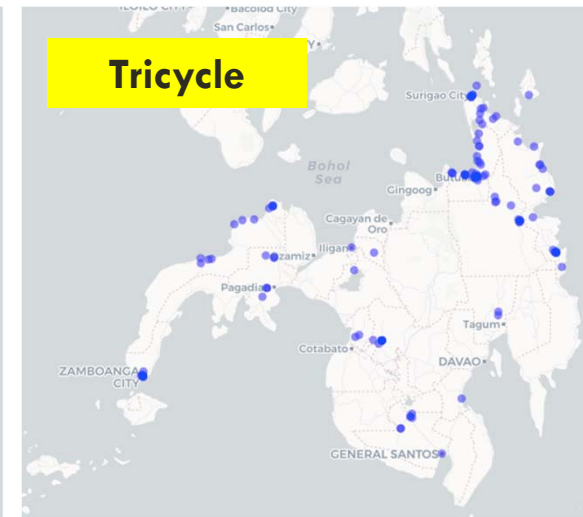
Trucks



Car



Tricycle



**Crashes in Mindanao
by Vehicle Type
May 2018 - present**

STRENGTHS

- Easy-to-use
- Geo-referenced and web-based
- No need for large capital outlay
- Integrates all data from different agencies
- Standardizes reporting
- Automates analytical tools

WEAKNESSES

- Requires strong road safety institutional arrangement
- Requires funding for training and roll-out
- Dependence on stable internet connection

OPPORTUNITIES

- Philippine Road Safety Action Plan (PRSAP 2017-2022)
- Legal instruments for DRIVER signed
- Growing awareness for importance of road safety in the Philippines
- Potential for an ASEAN database

THREATS

- Limited funding
- Sustainability

roadsafety.gov.ph

THANK YOU!