

3rd ITF Statistical Meeting 17-18 March 2016 - PARIS

6.4 – Transport Benchmarking Indicators

The project

- Request to produce indicators for a better comparison of transport statistics across countries
- Based on available data – no need for new data collection
- Comparison across countries in a given year, comparison of countries in time



Topics

- Transport infrastructure
- Transport equipment
- Transport measurement
- Traffic
- Economic and social
- Safety
- Energy and environment



Transport infrastructure

- Rail, road and airport density
- Distribution of road network by road type (motorways, urban roads)
- Distribution of railways network (electrified lines, high-speed lines)
- Inland infrastructure investment per GDP by transport mode
- Inland infrastructure investment per capita by transport mode
- Distribution of inland infrastructure investment by transport mode



Transport equipment

- Road motor vehicles per GDP by category
- Road motor vehicles per capita by category
- Distribution of road motor vehicles
- First registrations of brand new road vehicles per GDP
- First registrations of brand new road vehicles per capita
- Capacity of rail vehicles and flights per GDP
- Capacity of rail vehicles and flights per capita



Transport measurement

- Freight transport by mode per GDP (rail, road, inland waterways, air)
- Passenger transport by mode per GDP (rail, road, air)
- Distribution of freight and passenger transport by mode



Traffic

- Road traffic per GDP
- Road traffic per road motor vehicle

Economic and social

- Household expenditure for transport on total household expenditure
- Employment in the transport sector
- Contribution of transport to the total value added



Safety

- Fatalies per capita
- Fatalities per road motor vehicle
- Fatalities per vehicle-km



Energy and environment

- CO₂ emissions from transport per GDP
- CO₂ emissions from transport per capita
- Distribution of CO₂ emissions by transport mode
- Motor fuel deliveries per GDP
- Motor fuel deliveries per capita and per road motor vehicle



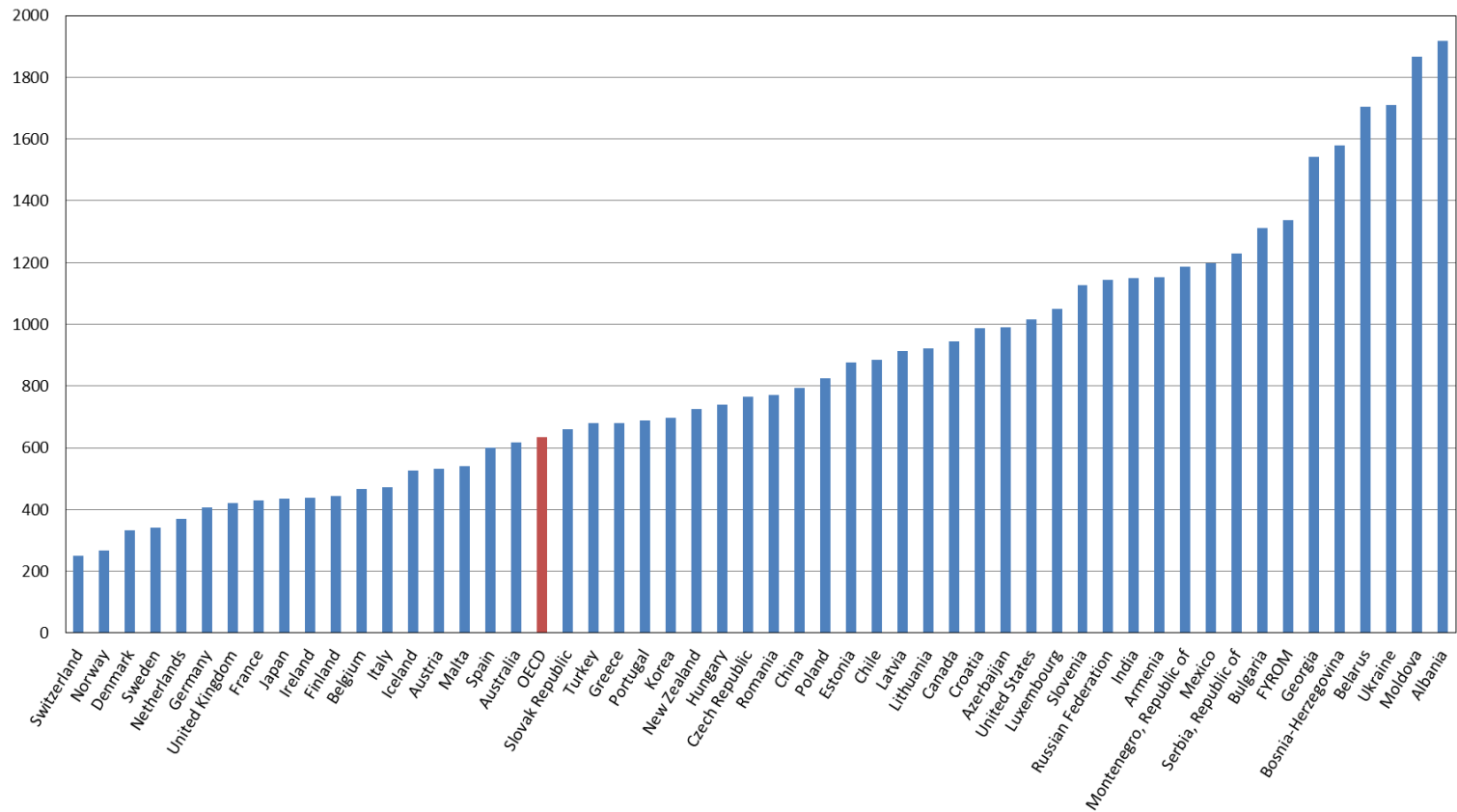
Sources

- ITF Investment in Transport Infrastructure Questionnaire
- ITF Quarterly Transport Questionnaire
- ITF Trends in the Transport Sector
- IRTAD database
- External sources: World Bank, Eurostat, ICAO, OECD



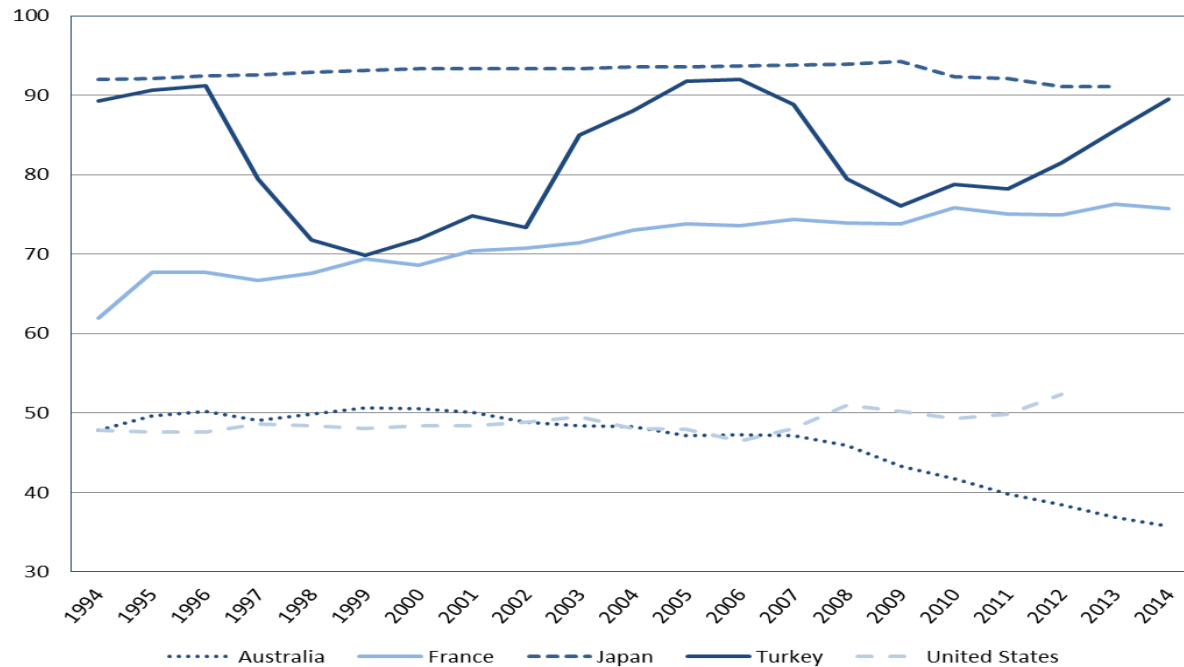
Examples of benchmarking

CO₂ emissions in tonnes per one thousand units of GDP, 2013



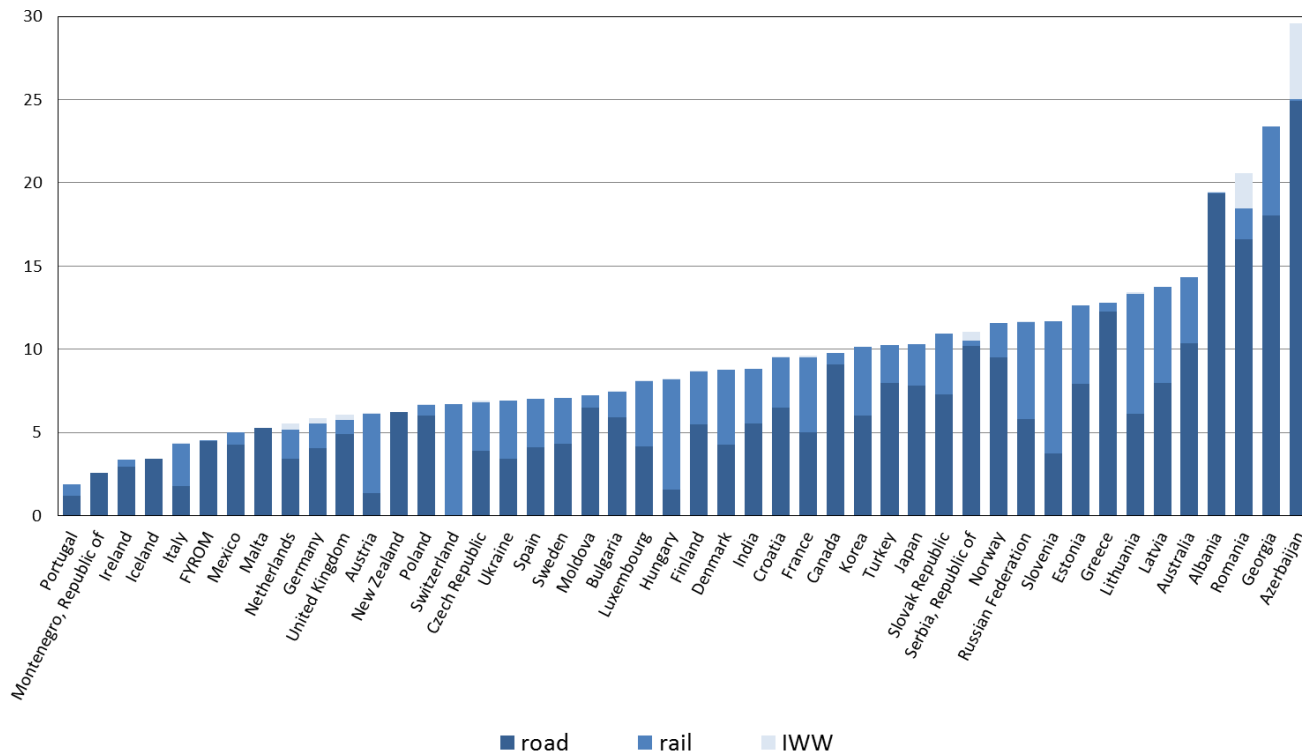
Examples of benchmarking

Share of road freight transport on total inland freight transport, 1994-2014



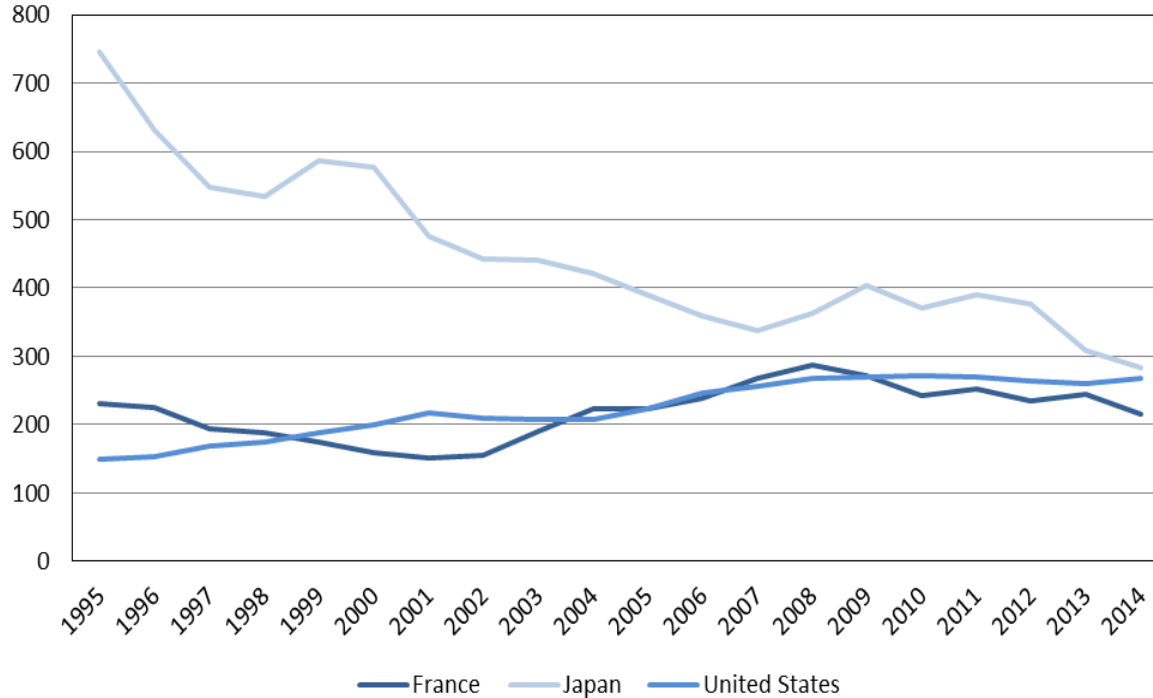
Examples of benchmarking

Rail, road and inland waterways infrastructure investment per one thousand units of GDP (current US\$), 2014



Examples of benchmarking

Road infrastructure investment per capita (current US\$), 1995-2014



Questions?

Comments?

Suggestions?



Thank you

Rachele POGGI

T +33 (0)1 45 24 87 40

rachele.poggi@itf-oecd.org

Postal address

2 rue Andre Pascal

75775 Paris Cedex 16