

A young girl with dark hair, wearing a black jacket over a teal shirt and red pants, is riding a bright yellow bicycle through a puddle on a city street. The bicycle has 'COLUMBI' written on the frame. The background is blurred, showing a sidewalk and some greenery. The text 'Road Safety, Climate Change, Gender Equality, and Public Health: Linkages and Tensions' is overlaid in white on the upper half of the image.

Road Safety, Climate Change, Gender Equality, and Public Health: Linkages and Tensions

CLAUDIA ADRIAZOLA-STEIL, WRI ROSS CENTER

ROAD SAFETY AND CLIMATE CHANGE

The transport sector is responsible for 24% of global GHG emissions.



ROAD SAFETY IS A PUBLIC HEALTH CRISIS



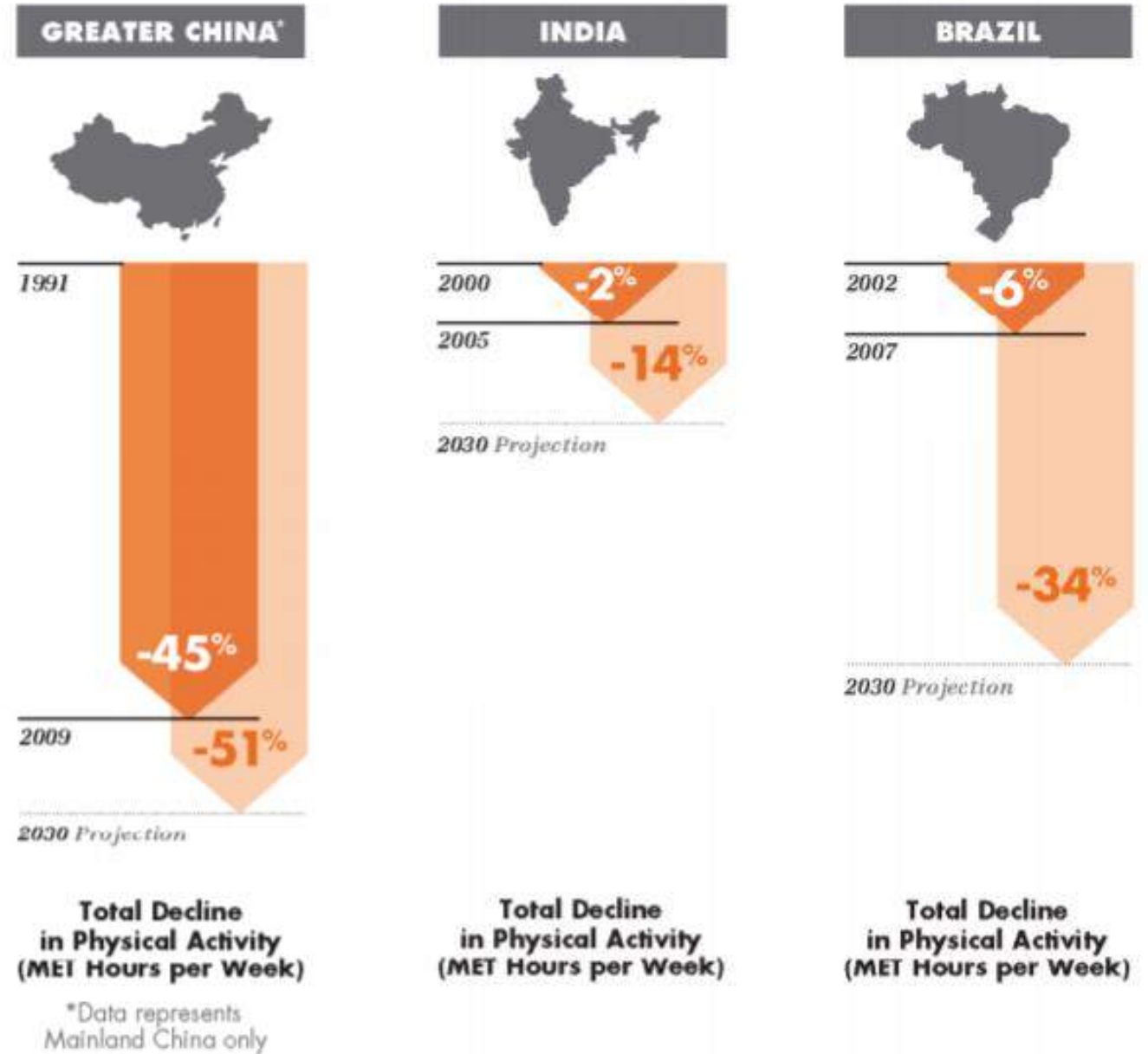
A RACE TO SLOW DOWN


As Economies Grow, People Stop Moving



Research suggests that the faster an economy grows, the **faster physical activity declines**.

In just 18 years, physical activity in China was reduced by 45%.





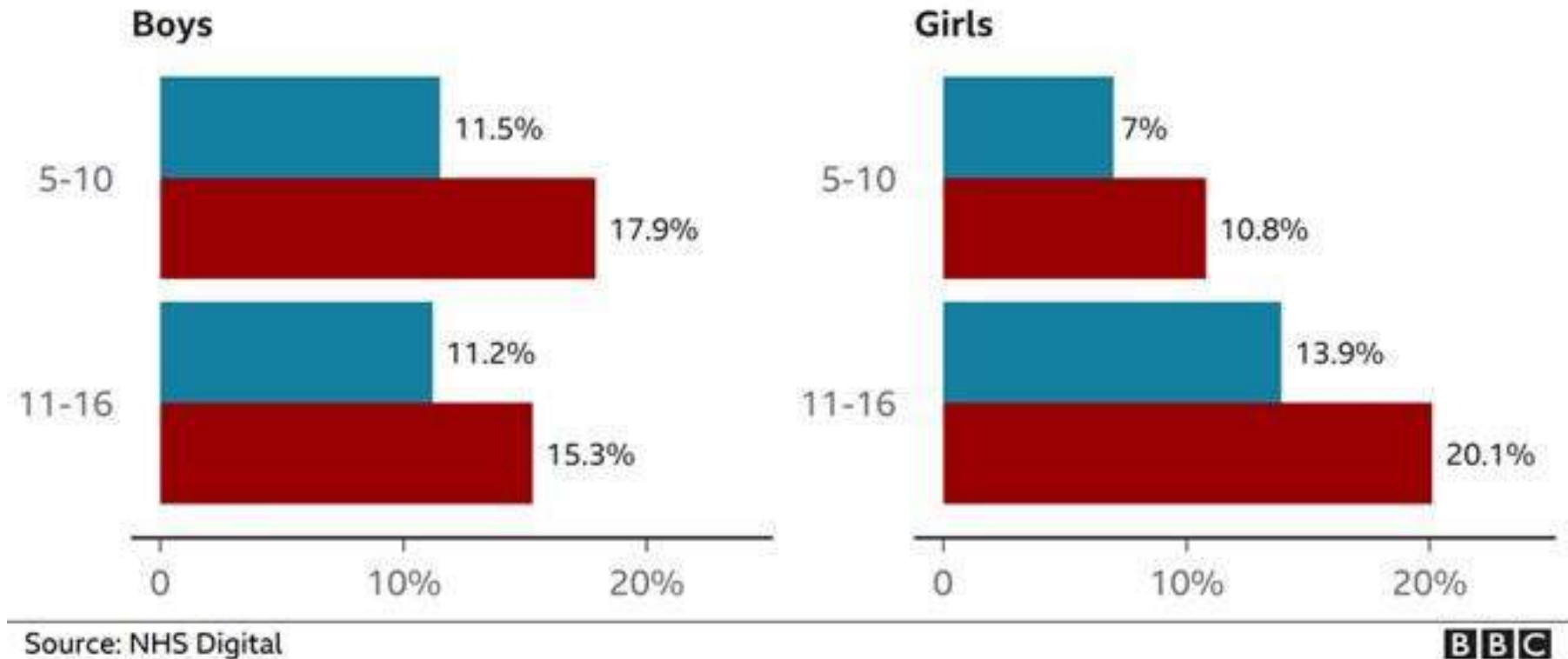
92% of people breathe polluted air

MENTAL HEALTH: CHILDREN

Mental health in children has worsened

% of children with probable mental health problems by age-group, England

■ 2017 ■ 2020



CASE: LIMA, PERU

- In Lima, most traffic crashes involving youth victims occurred **during school vacation times** in 2019 and 2020
- The majority of these victims were also **pedestrians** – 45% in 2019 and 48% in 2020



PUBLIC HEALTH, TRANSPORT, & COVID-19

Annual deaths from traffic crashes

1,350,000

Annual deaths due to poor air quality

7,000,000

Annual deaths related to physical inactivity

3,200,000

Total:

11,550,000

Deaths from COVID-19:

Nov. 1, 2019 – Oct. 31, 2020

1,290,492

Nov. 1, 2019 – Nov. 19, 2021

5,151,684

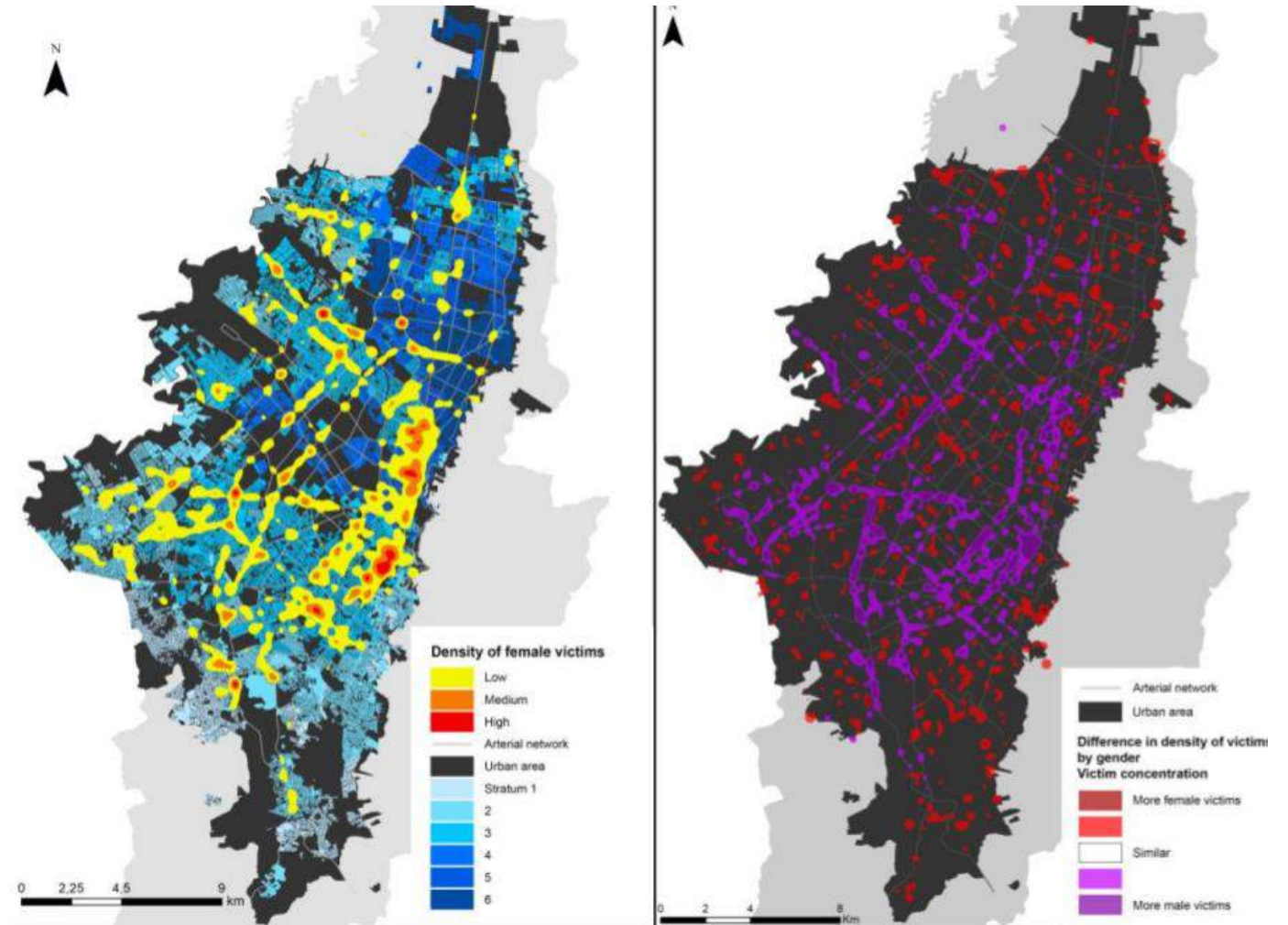
ROAD SAFETY AND GENDER EQUALITY



ROAD SAFETY AND GENDER EQUALITY

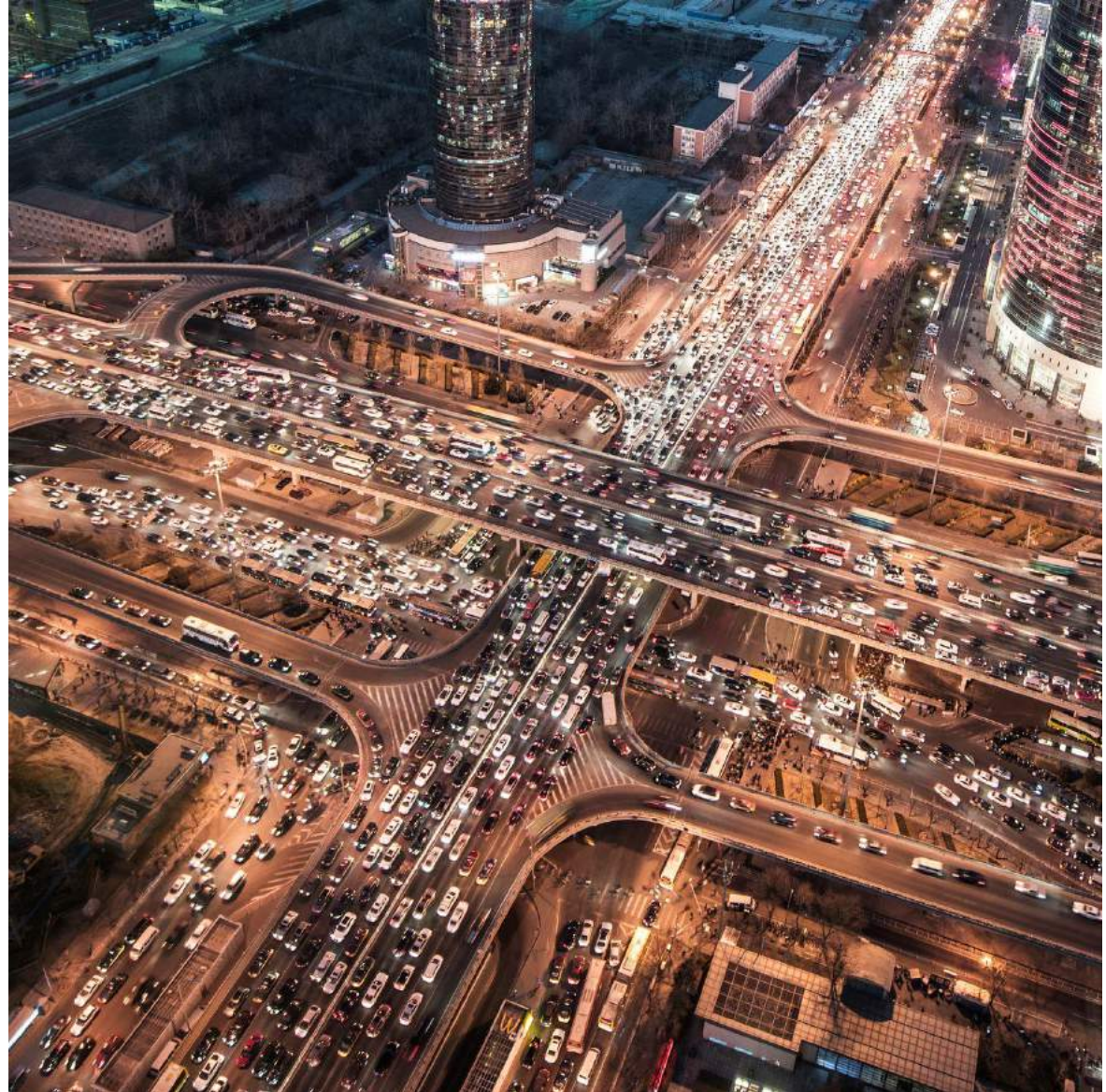
Concentration of police-reported women victims (injured or fatal) in road crashes (left) and difference between men and women (right)

- In an analysis of Bogotá, most women killed in road crashes were **pedestrians** and most of these crashes occurred in **low-income neighborhoods**.
- In the same analysis, the main reported reason for women not biking is **concerns about road safety**.



ACTIONS TO ALIGN POLICIES

**THE
PROBLEM
WITH
CITIES NOW**



SET TANGIBLE AND ACHIEVABLE INDICATORS

CO2 reductions/ Net Zero Cities

Mode share

Safe bike and pedestrian networks

Women, children, and elderly using mass transport,
walking, and cycling

Air quality

Accessibility

Physical activity

Children's mental health

A woman with dark hair, wearing a black jacket over a teal shirt and red pants, is riding a bright yellow bicycle through shallow water. The bicycle has 'Catalina' written on the frame. The background is blurred, suggesting motion. The text 'THANK YOU!' is overlaid in white, bold, sans-serif font across the center of the image.

THANK YOU!

CLAUDIA ADRIAZOLA-STEIL, WRI ROSS CENTER