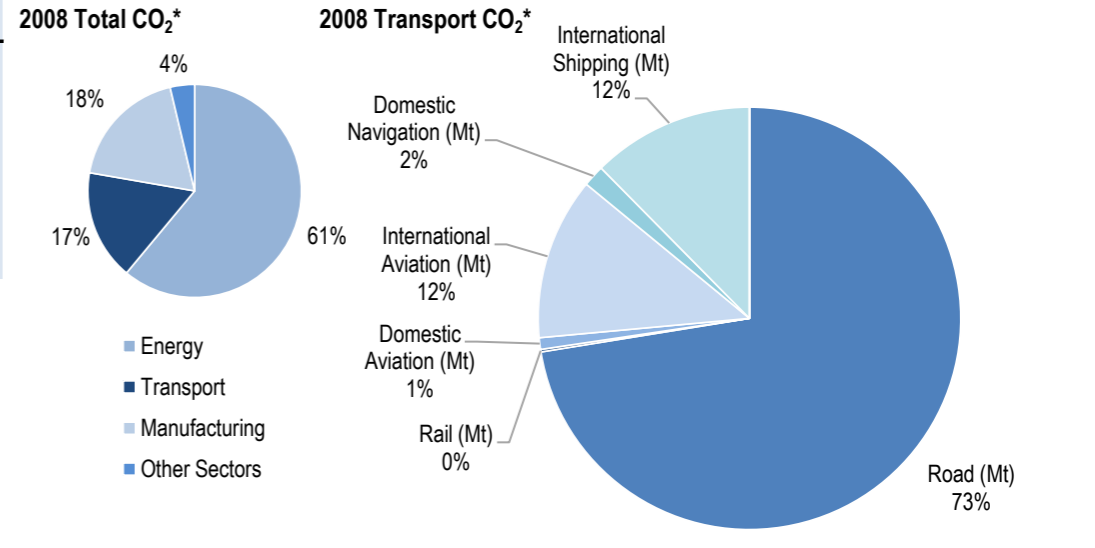
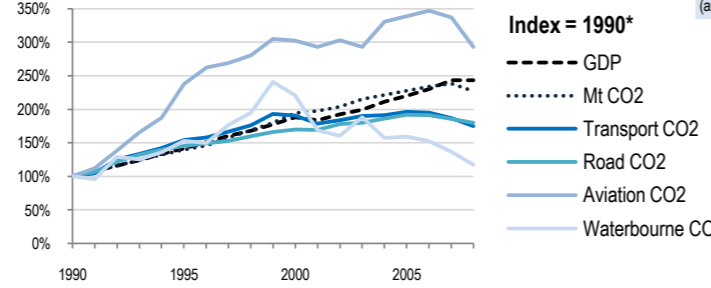
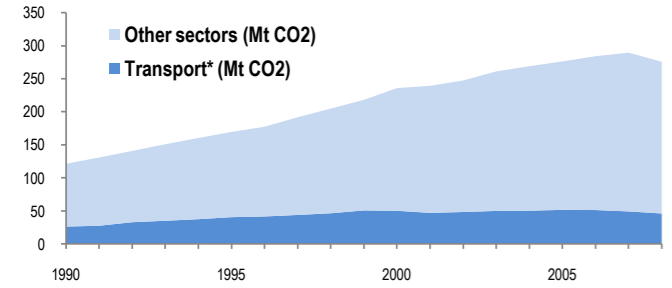


Chinese Taipei



Change 1990-2008*	Mt (axis set -50%,100%)	2008	T/capita	2008, Kg/\$2000 PPP	2008	2007-2008	(%Mt)
Total CO ₂	127%	275.72	101%	12.03	-7%	0.43	-4.7%
Transport CO ₂	75%	46.06	55%	2.01	-28%	0.07	-6.3%
Road CO ₂	80%	33.37	59%	1.46	-26%	0.05	-3.2%
Aviation CO ₂	193%	6.13	160%	0.27	20%	0.01	-13.0%
Waterbourne CO ₂	17%	6.47	4%	0.28	-52%	0.01	-14.3%



Transport and the Economy	1990	1995	2000	2001	2002	2003	2004	2005	2006	2007	2008	1990-2008	%/year**	% 2007-2008
Population (millions)	20.28	21.29	22.18	22.34	22.45	22.54	22.62	22.70	22.78	22.86	22.92	13%	0.68%	0.26%
GDP PPP (billion 2000 US dollars)	261.44	370.83	491.35	480.69	502.99	520.60	552.62	575.11	602.02	636.32	637.10	144%	5.07%	0.12%
Road passenger km (million pkm)
Road and Rail freight tkm (million tkm)
Road pkm/capita
Road and Rail freight tkm/\$ gdp
Passenger cars per 1000 inhabitants

CO2 Emissions	1990	1995	2000	2001	2002	2003	2004	2005	2006	2007	2008	1990-2008	%/year**	% 2007-2008
IEA CO ₂ from fuel combustion (Mt)*	121.31	169.44	235.83	239.31	247.42	261.08	268.97	276.22	284.15	289.44	275.72	127%	4.67%	-4.74%
... of which transport CO ₂ (Mt)*	26.29	40.52	50.13	47.01	48.33	49.96	50.3	51.57	51.3	49.17	46.06	75%	3.16%	-6.32%
Transport* as a percentage of total	21.7%	23.9%	21.3%	19.6%	19.5%	19.1%	18.7%	18.7%	18.1%	17.0%	16.7%
Road (Mt)	18.55	26.96	31.47	31.45	33	33.33	34.6	35.57	35.52	34.47	33.37	80%	3.32%	-3.19%
Rail (Mt)	0.13	0.14	0.12	0.12	0.12	0.11	0.1	0.1	0.1	0.09	0.09	-31%	-2.02%	0.00%
Domestic Aviation (Mt)	0.3	0.88	0.94	0.86	0.79	0.66	0.67	0.62	0.54	0.41	0.41	37%	1.75%	0.00%
International Aviation (Mt)	1.79	4.09	5.38	5.26	5.54	5.46	6.24	6.46	6.72	6.64	5.72	220%	6.67%	-13.86%
Domestic Navigation (Mt)	0.67	0.88	1.2	1.34	1.18	0.95	1.05	1.1	1.03	0.93	0.76	13%	0.70%	-18.28%
International Shipping (Mt)	4.86	7.57	11.02	7.98	7.69	9.45	7.64	7.72	7.39	6.62	5.71	17%	0.90%	-13.75%
Other Transport (Mt)	0	0	0	0	0	0	0	0	0	0	0

GHG Emissions	1990	1995	2000	2001	2002	2003	2004	2005	2006	2007	2008	1990-2008	%/year**	% 2007-2008
UNFCCC GHG emissions (Mt CO ₂ eq.)*
UNFCCC GHG fuel combustion (Mt CO ₂ eq.)*
... of which transport GHG (Mt CO ₂ eq.)*
Road (Mt)
International Aviation (Mt)
International Shipping (Mt)

* includes emissions from international aviation and international maritime bunkers - there is no internationally agreed allocation mechanism for these and totals here are indicative of the scale of these emissions, not of their national "ownership" ** available yrs.