

Decarbonizing Transport in Emerging Economies: From an Urban Perspective - Azerbaijan

February 9, 2023

Alvin Mejia / Santhosh Kodukula



Climate



Energy



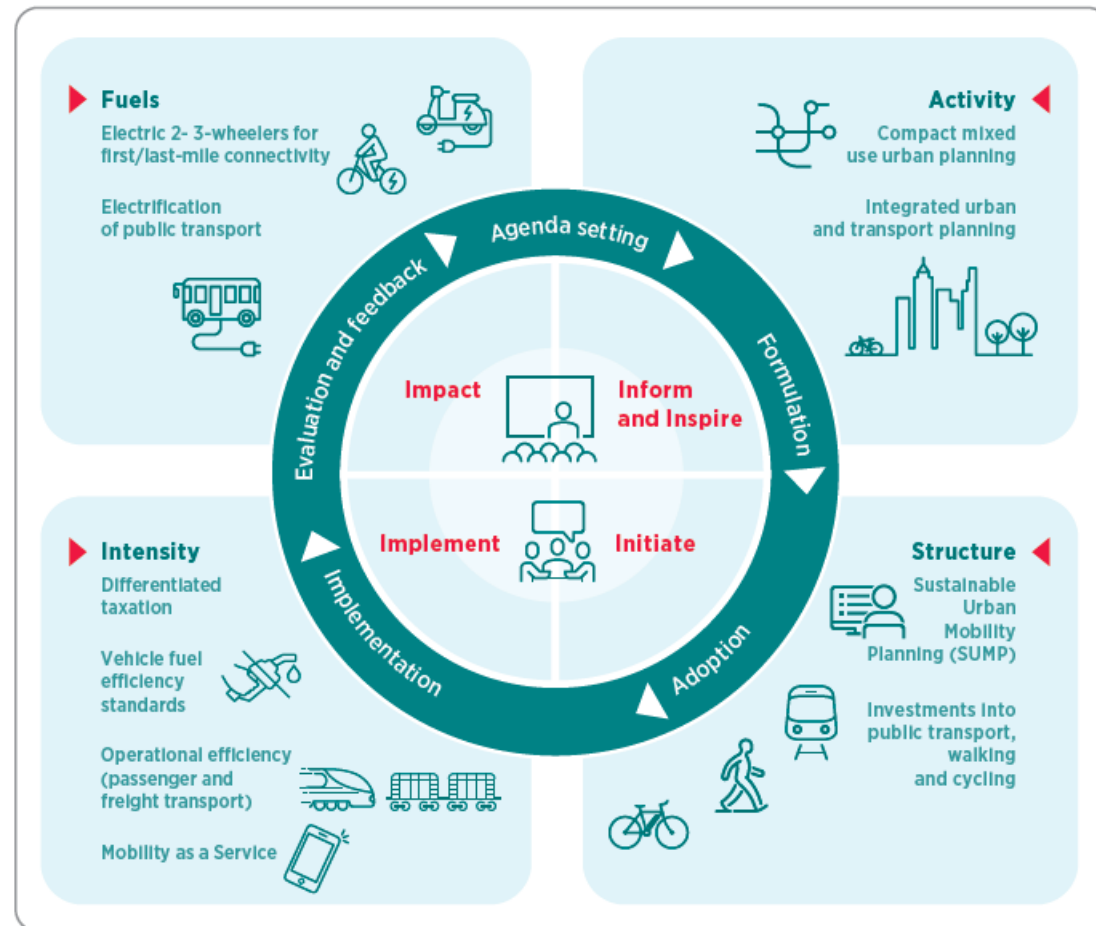
Resources



Circular
Economy

- Research Institute
- Owned by the State of North Rhine-Westphalia, Germany
- Working on Energy, Climate, Circular Economy and Mobility'
- >200 employees
- In Wuppertal and Berlin

Urban Living Lab Center (Mobility and International Cooperation)



Quelle: Wuppertal Institut 2020

Policies and institutions that deliver on the potential of sustainable urban mobility solutions:

- > Impact Assessment
- > Governance and institutions
- > Decarbonisation Pathways
- > Sector integration (mobility, energy, resources and planning)
- > Science Policy Interface
- > Capacity building
- > Outreach, dissemination & visibility

Background

➤ **Project funding**

International Climate Initiative (“IKI”) of the Federal Ministry for Economic Affairs and Climate Action (BMWK) in close cooperation with the German Ministry for the Environment, Nature Conservation and Nuclear Safety (BMUV)

➤ **Project partners**

International Transport Forum – main implementing partner

Wuppertal Institute, Germany – focus on work in cities

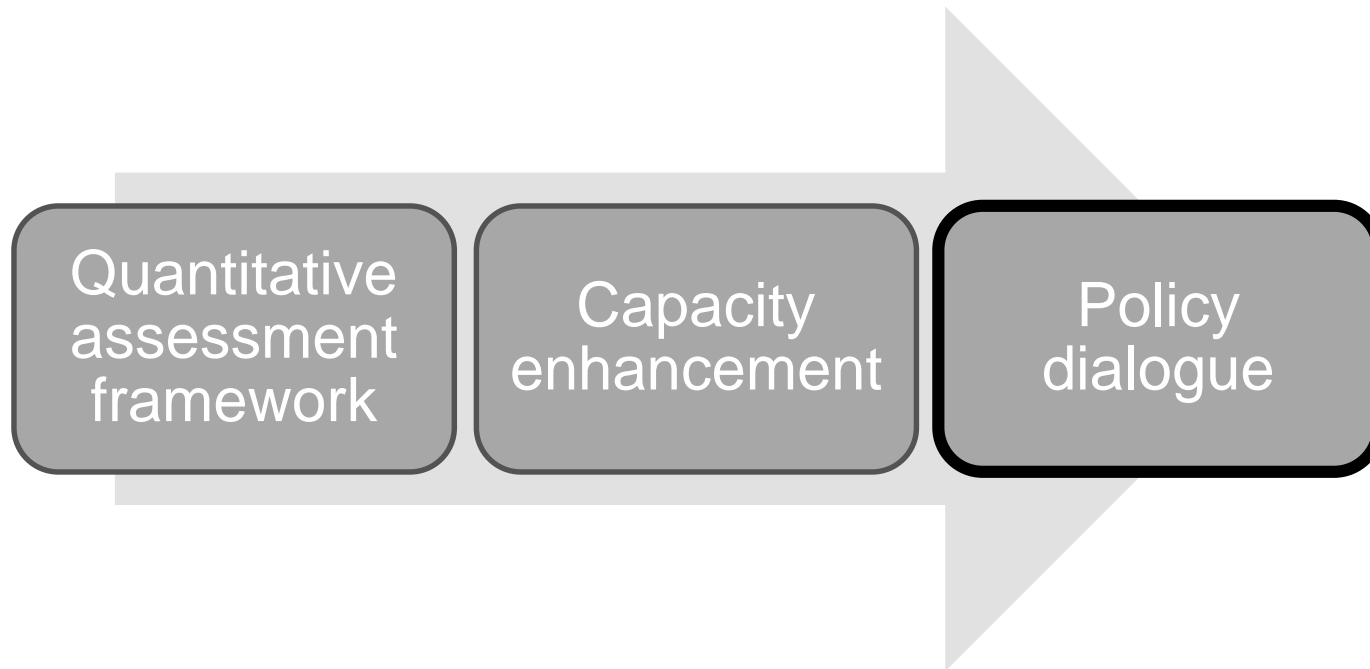
➤ **Project countries**

Azerbaijan, Argentina, India, Morocco



Project Objective

Help countries identify effective measures and pathways to reduce transport CO₂ emissions



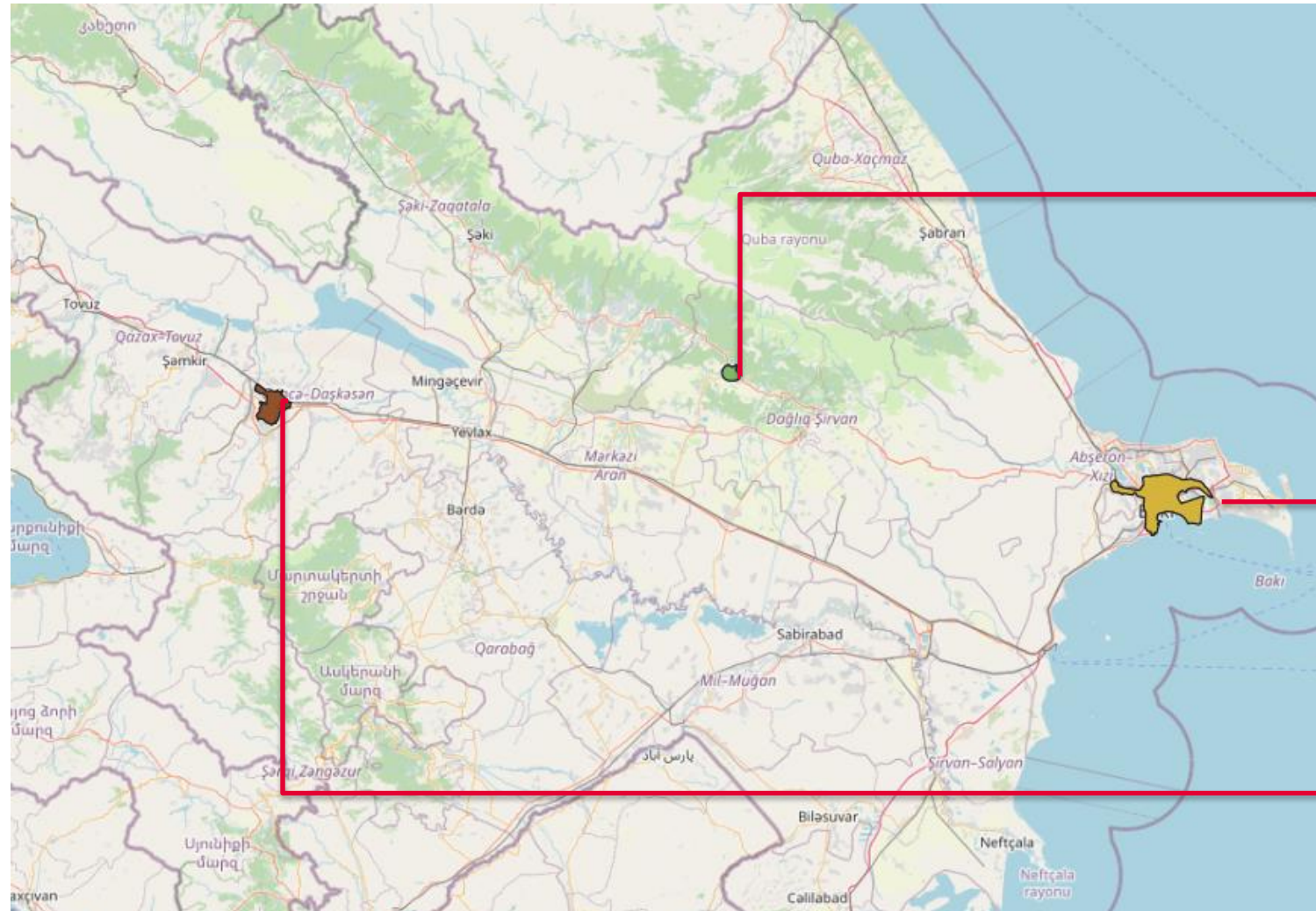
- Urban transportation will increasingly become a **key issue**, not only in terms of GHG emissions, but also in ensuring higher quality of life, and wider sustainability
- Moving towards sustainable, low emissions urban mobility entails multi-scalar, multi-stakeholder **cooperation** towards tackling multi-faceted issues
- Need to **strengthening multi-level discussions** regarding the future of transportation at the urban level in Azerbaijan and explore the gaps and opportunities for improving **multi-level governance** towards transport decarbonisation

- Facilitate policy dialogue between local & national government decision makers to support the linkages between national and local policies and actions
 - Transport needs assessment from a local government perspective (survey, interviews, discussions with partner cities, desktop analysis using available/open data)

- Work with cities to identify their technical and capacity building needs and develop appropriate capacity building materials
 - survey, interviews
 - integration of topics identified in Azerbaijan, and development of materials with other countries

- Identify other cities and countries to share experiences

DTEE Partner Cities in Azerbaijan

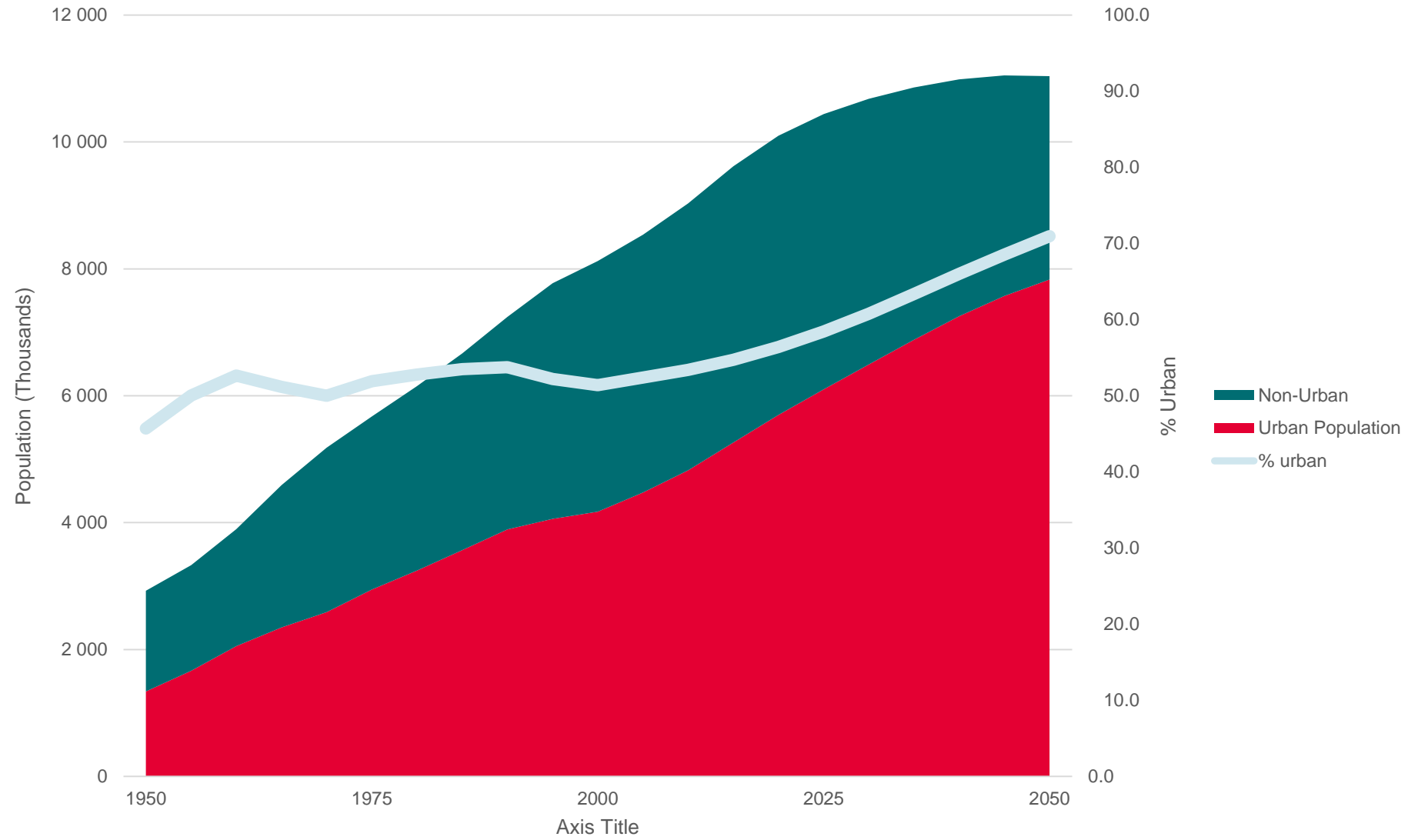
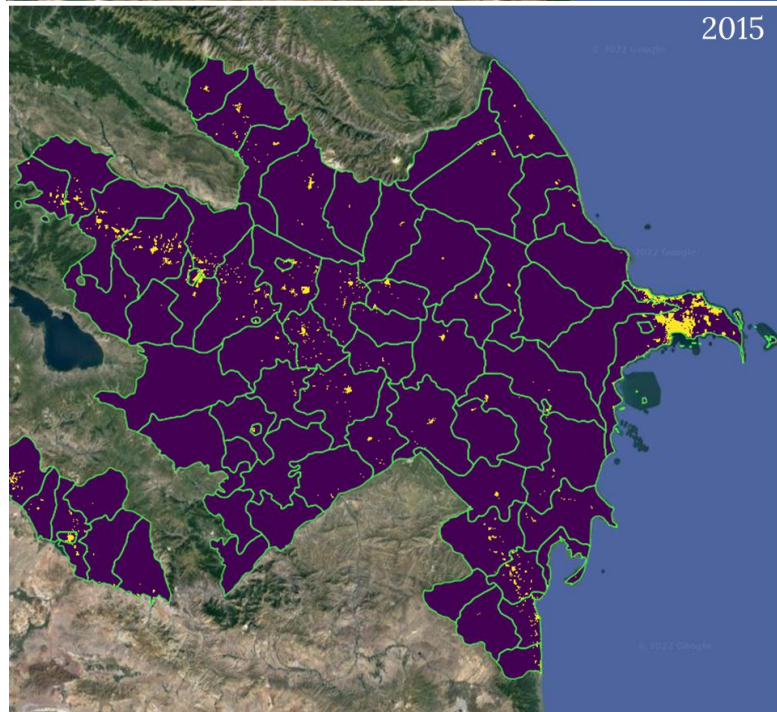
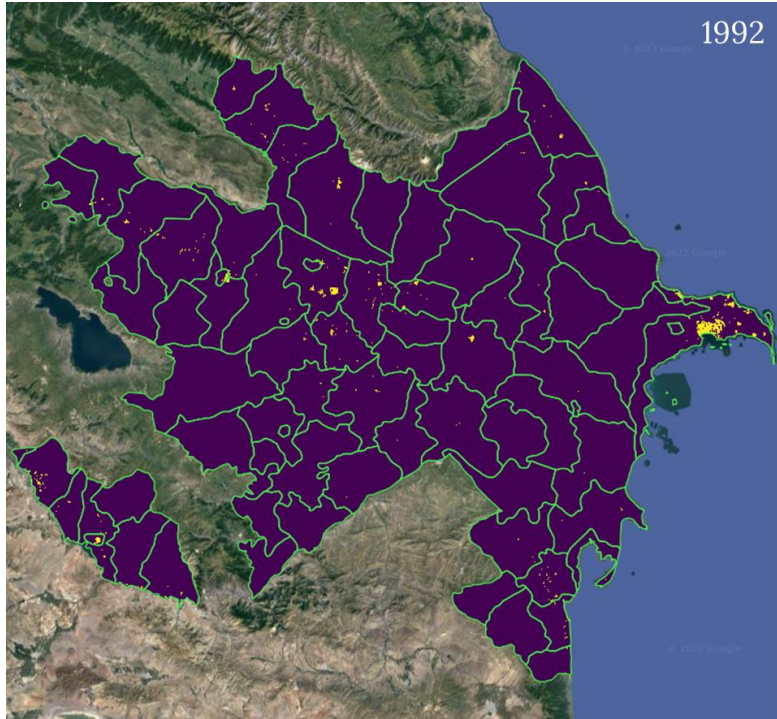


Ismayilli
Ismayilli Rayon Executive Office

Baku City
Bakı Nəqliyyat Agentliyinin

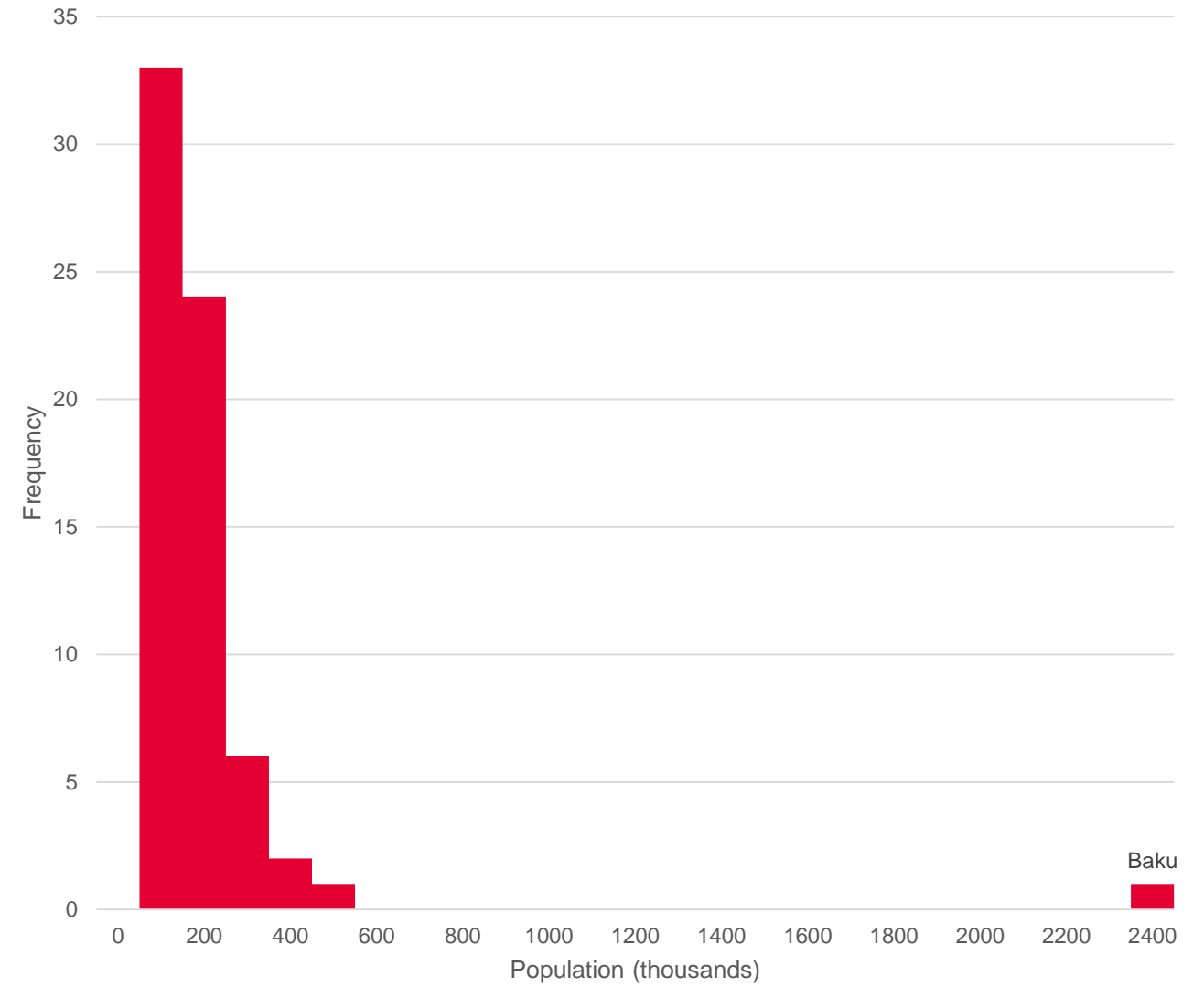
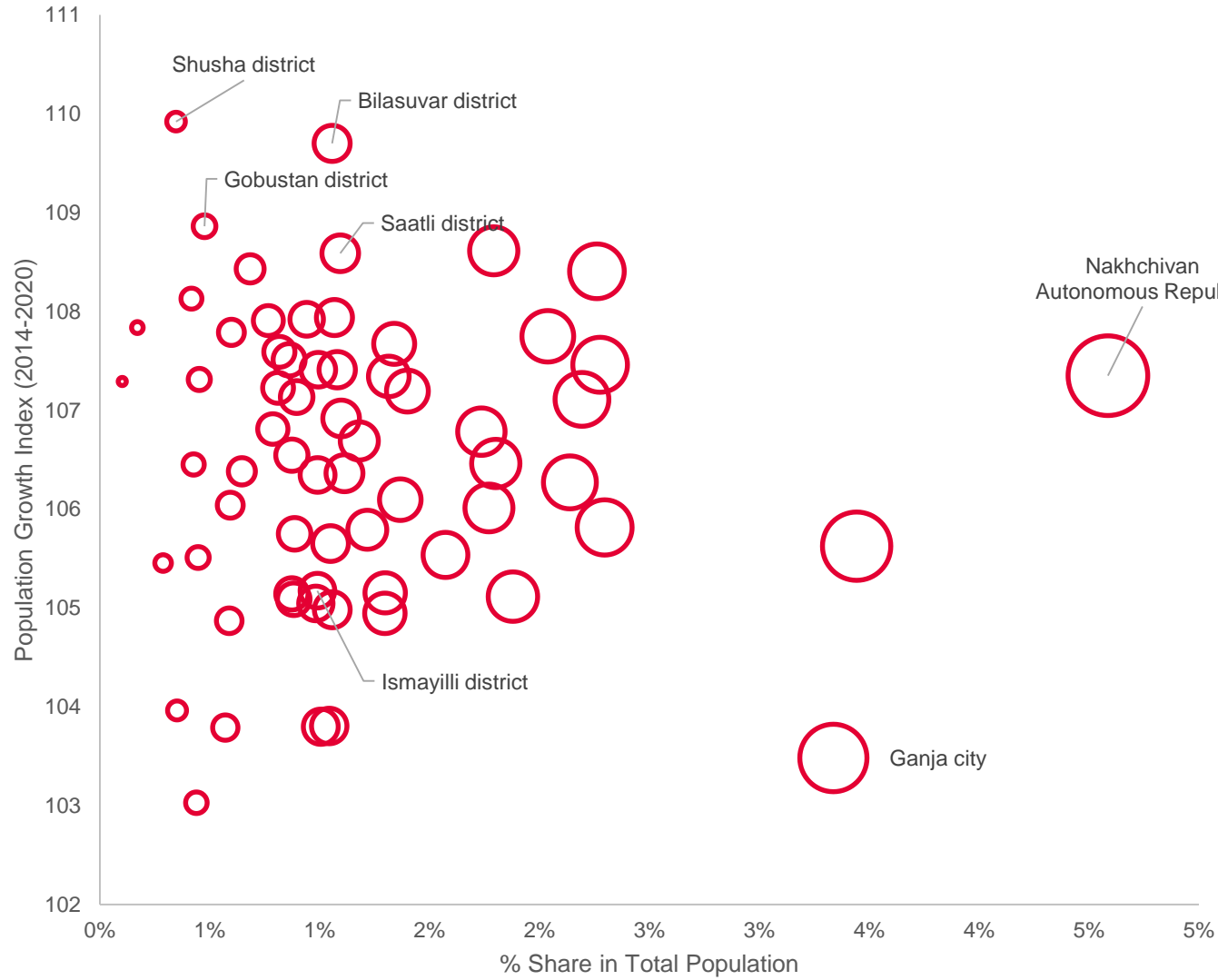
Ganja City
Ganja Transport Office

Quick Scan of Trends: Urbanization



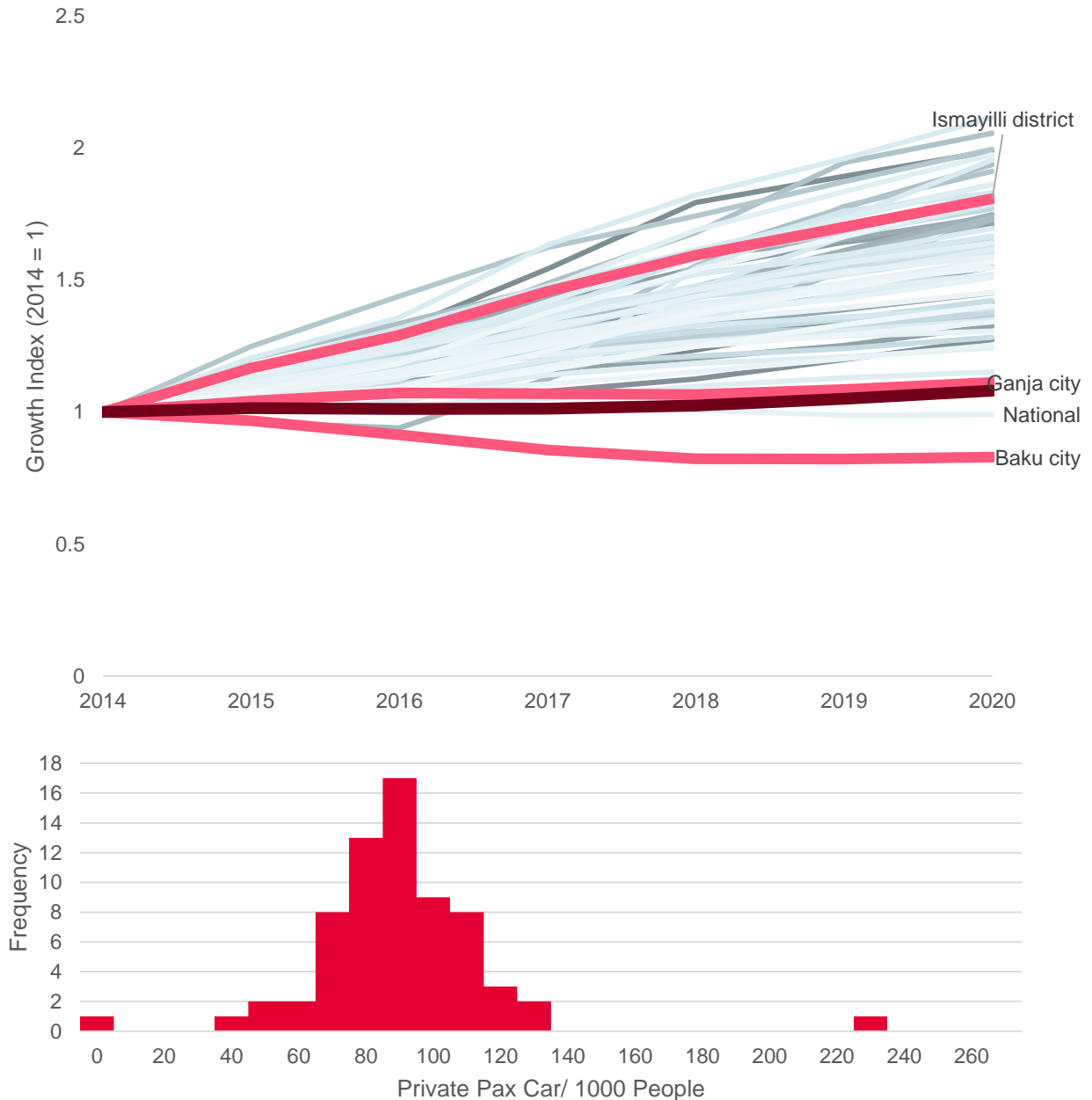
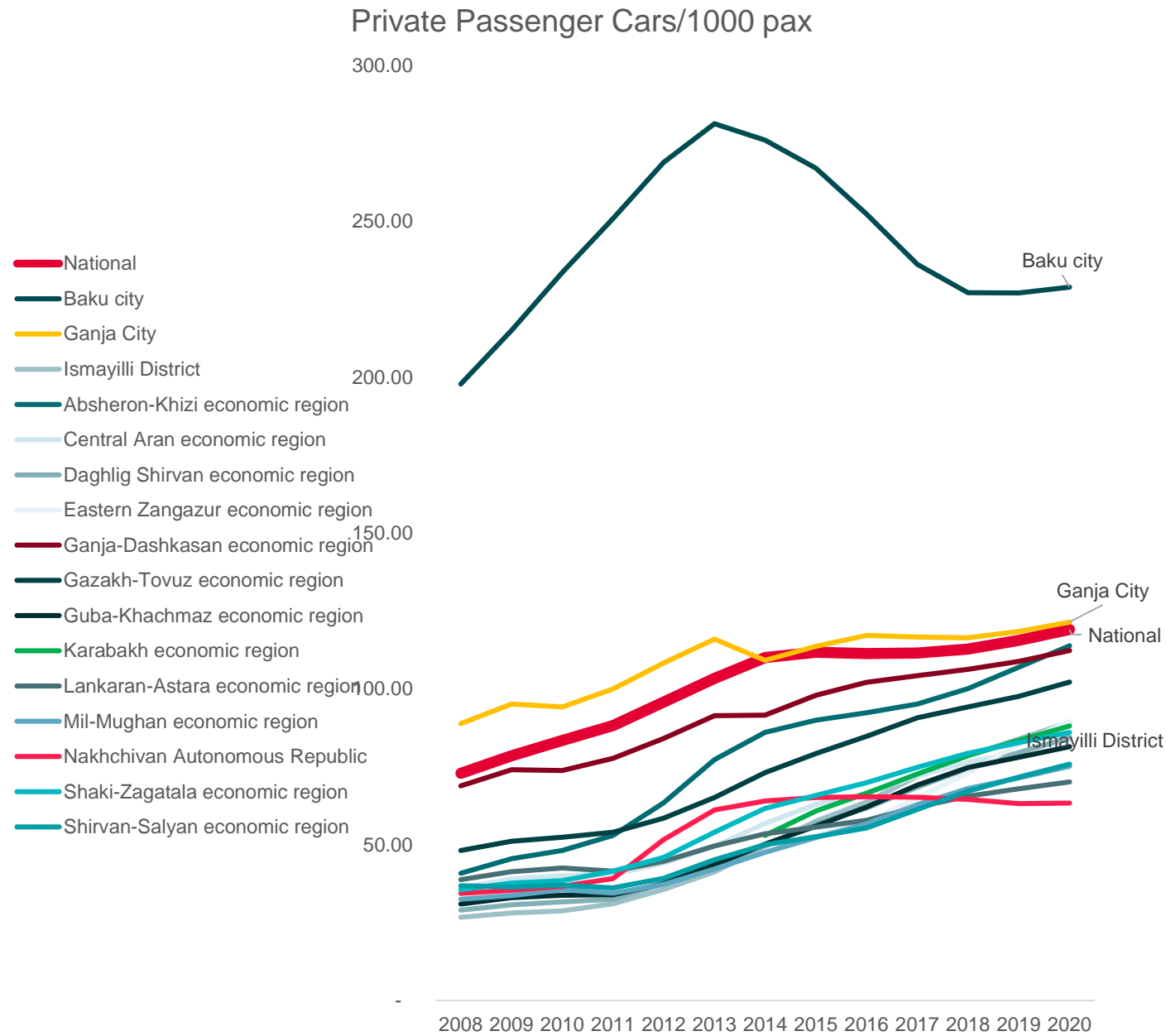
Source: Left: Own visualization, data from UNESCAP ; Right: Data from UN (2021)

Quick Scan of Trends: Population

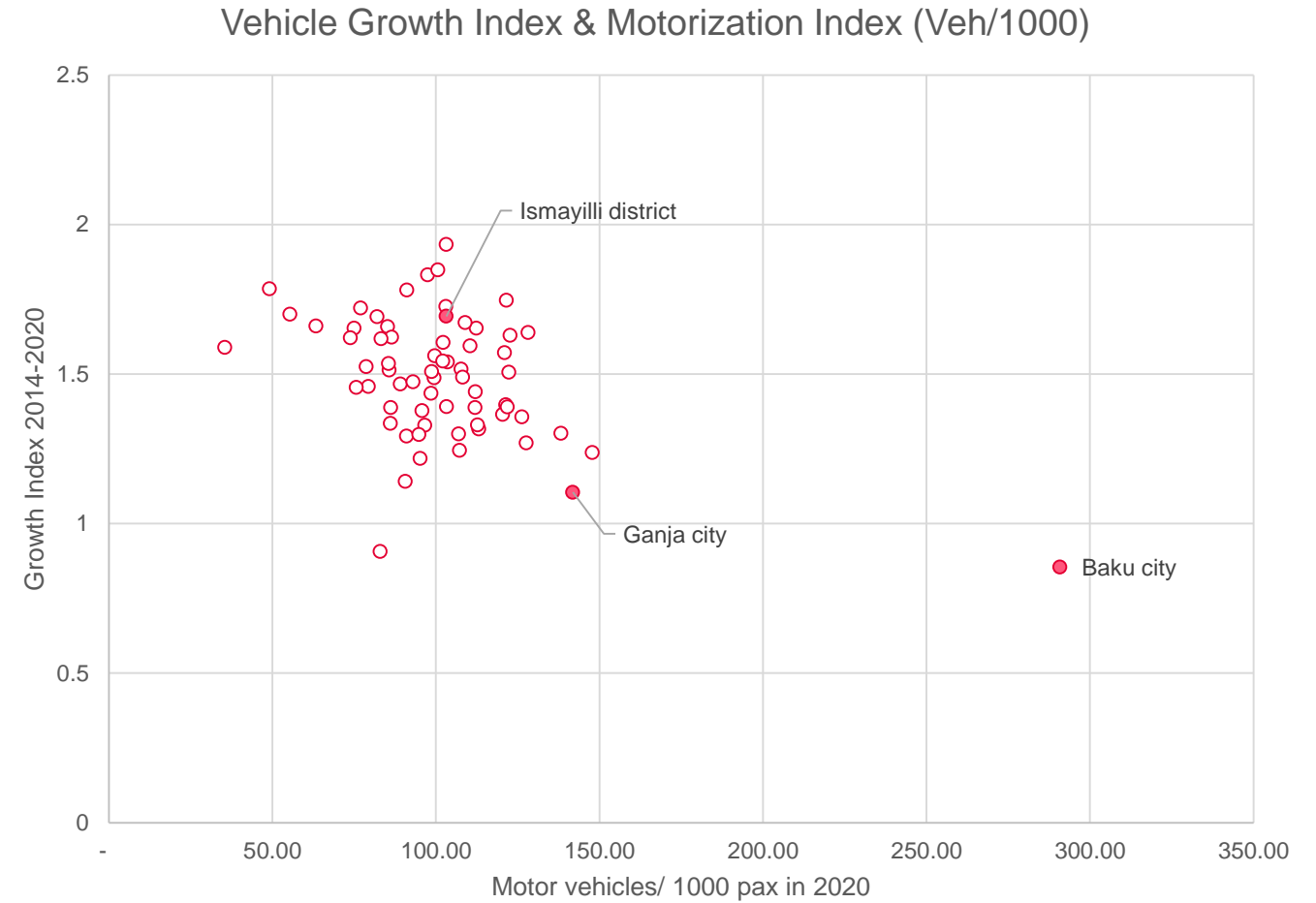
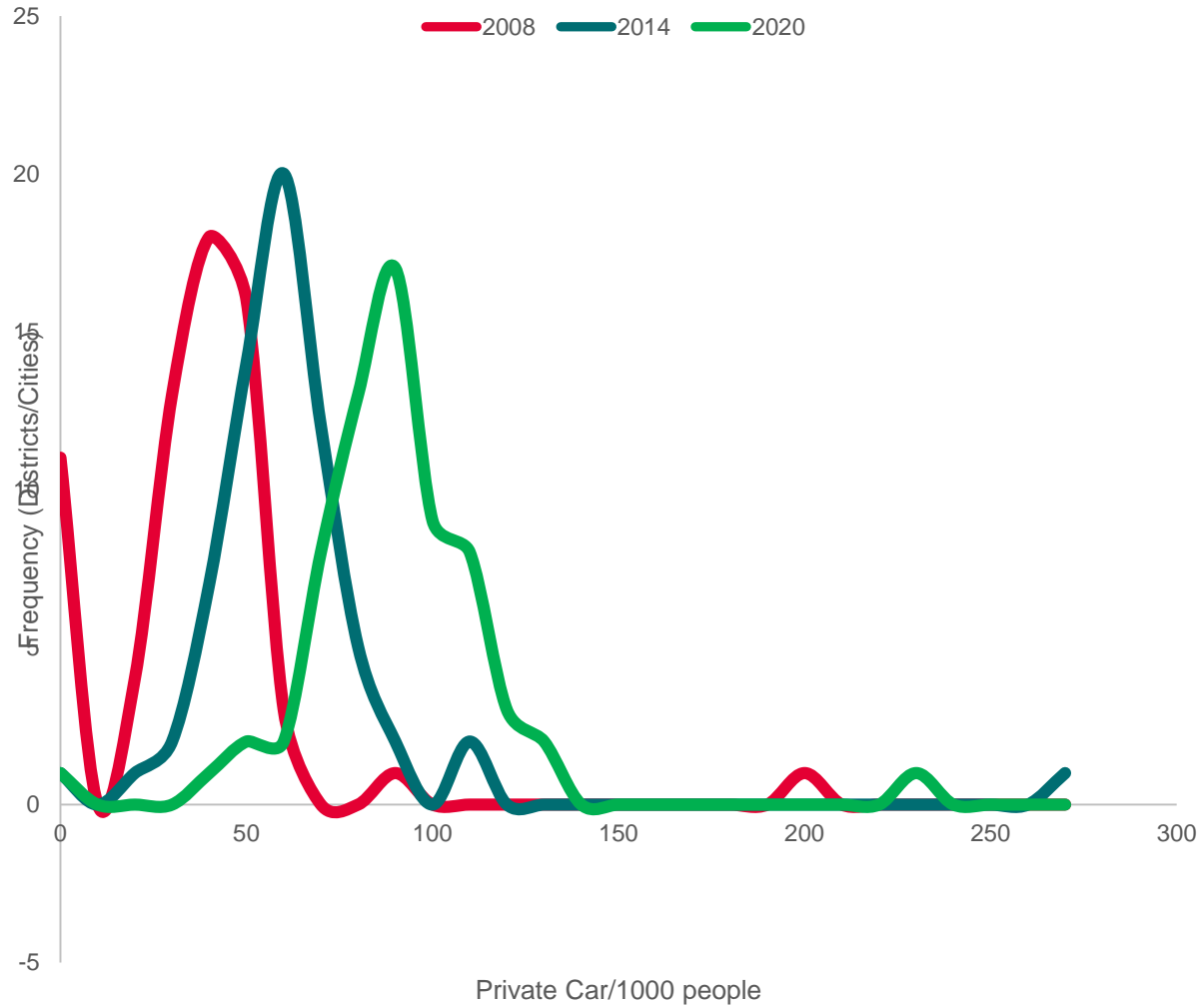


Source: Own visualisation using data from the AZstats

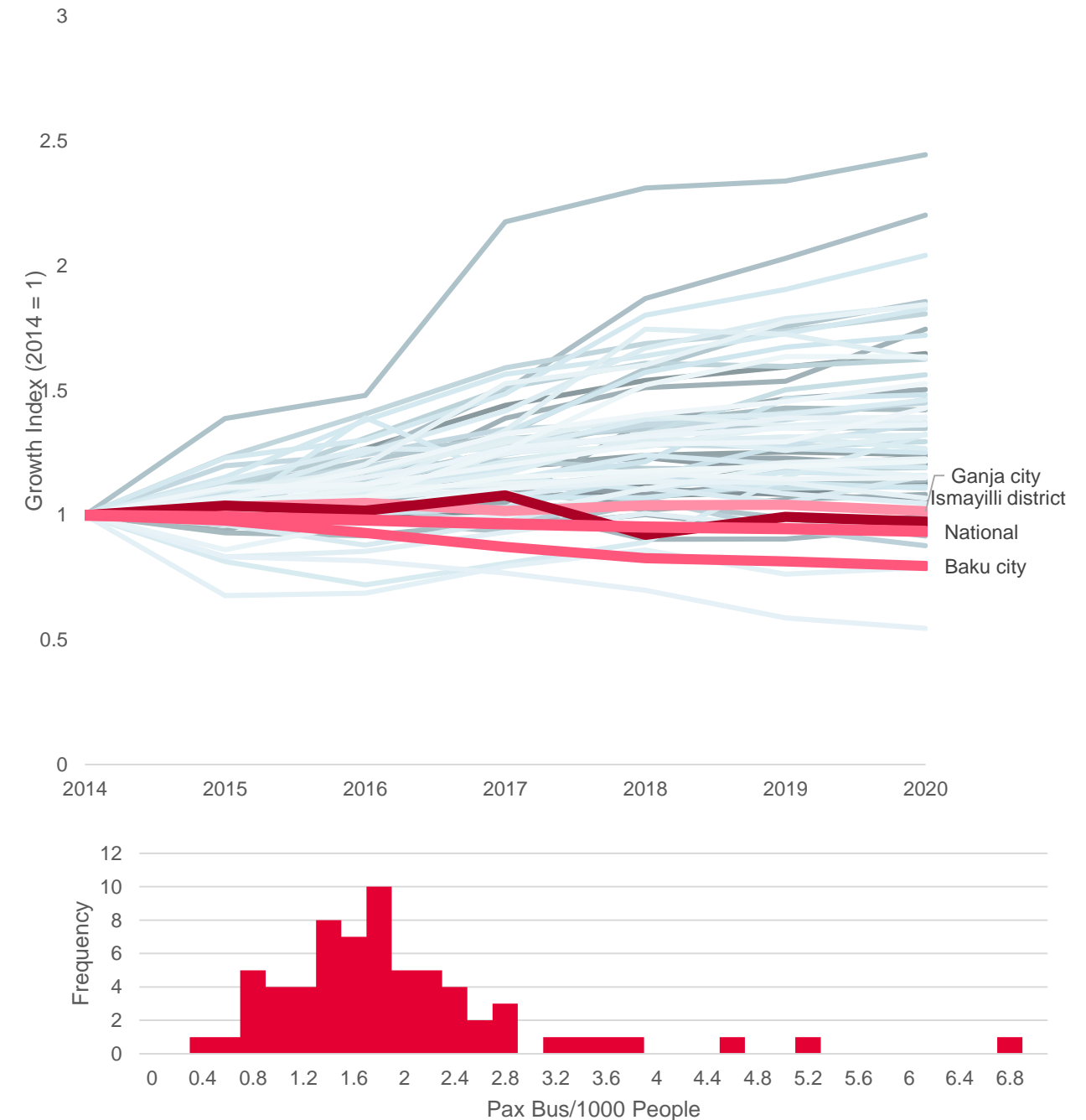
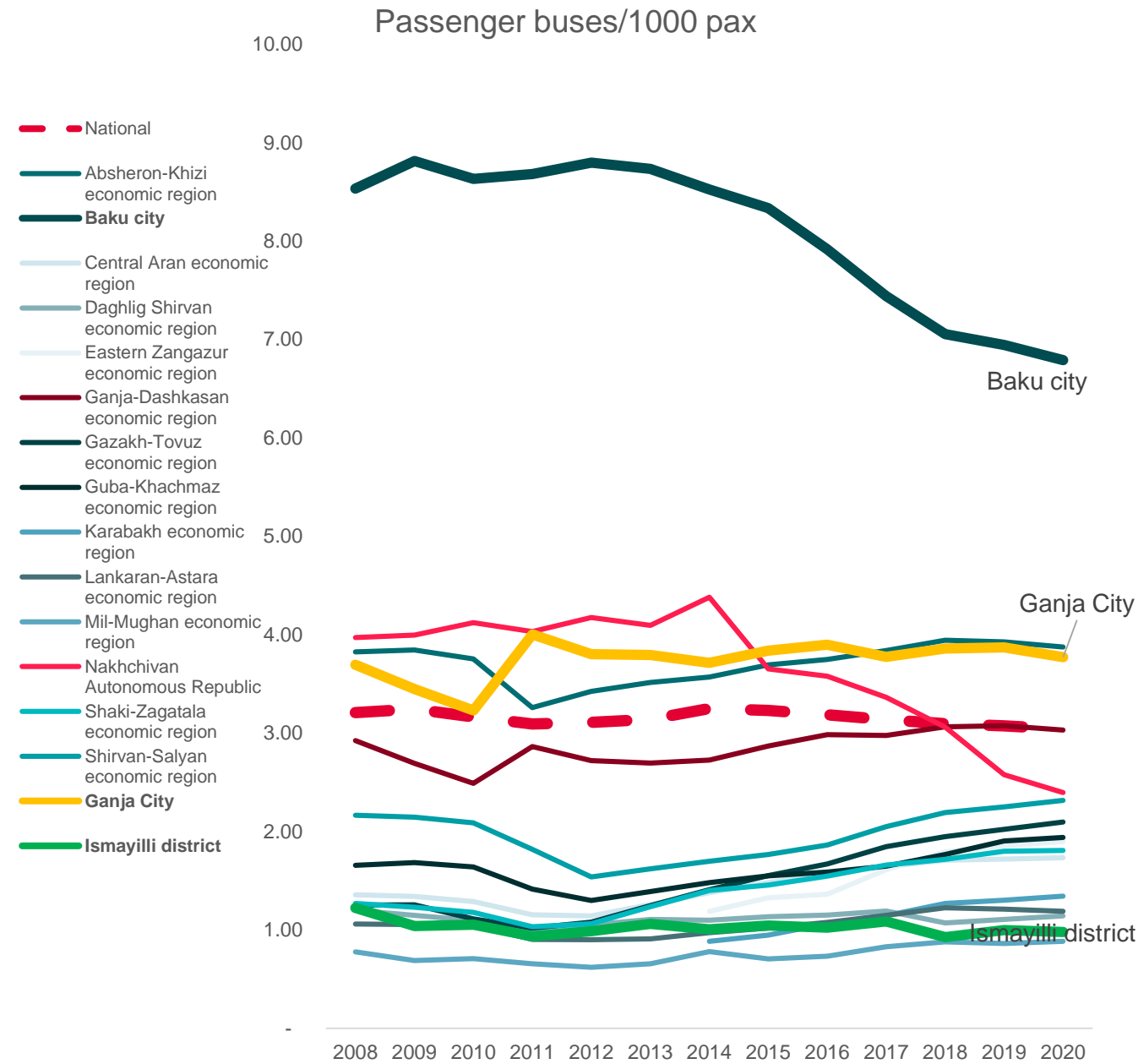
Quick Scan of Trends: Private Passenger Car/ 1000 People



Quick Scan of Trends: Private Passenger Car/ 1000 People

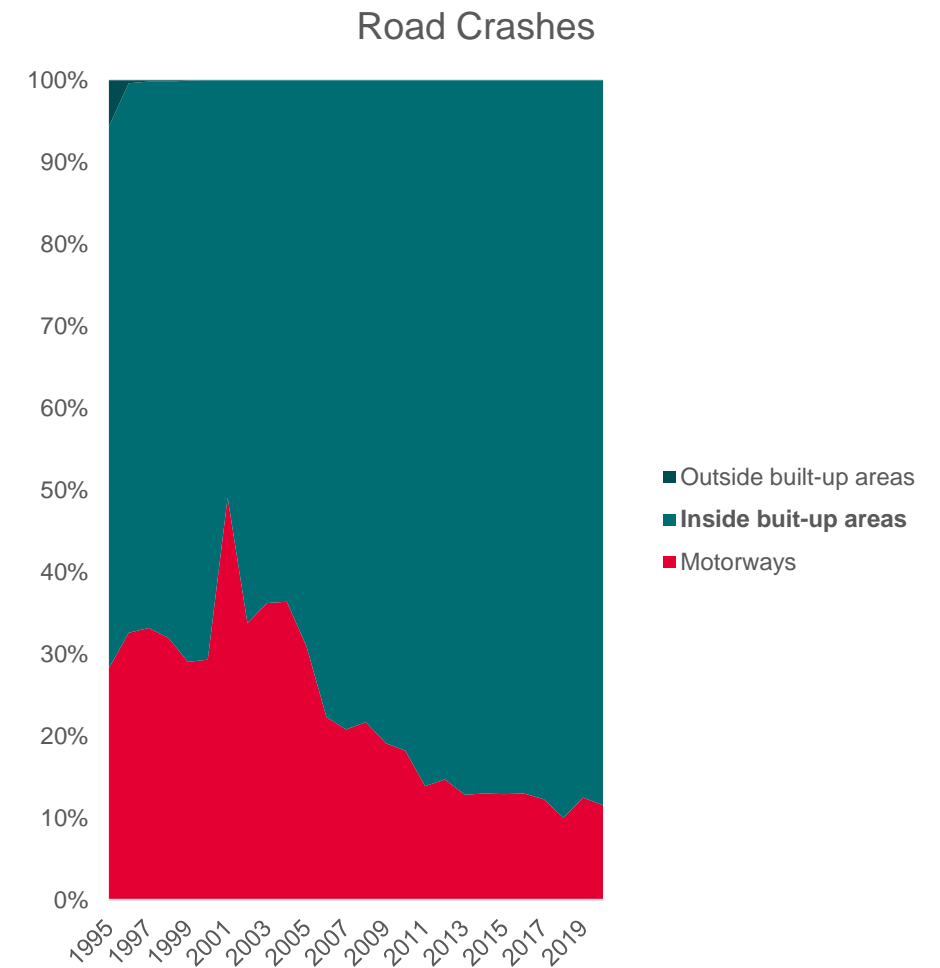
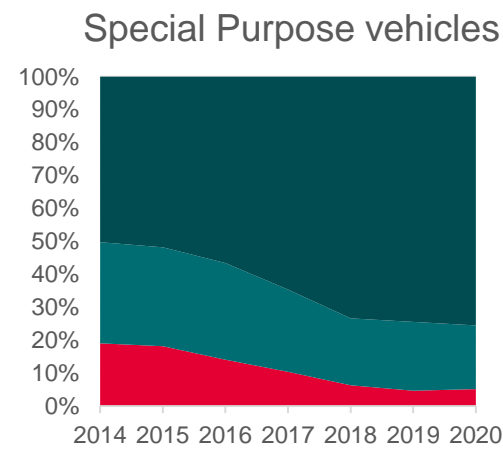
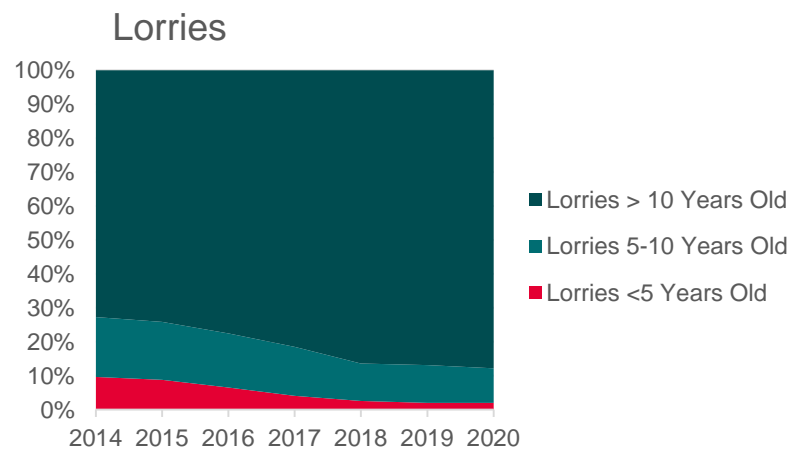
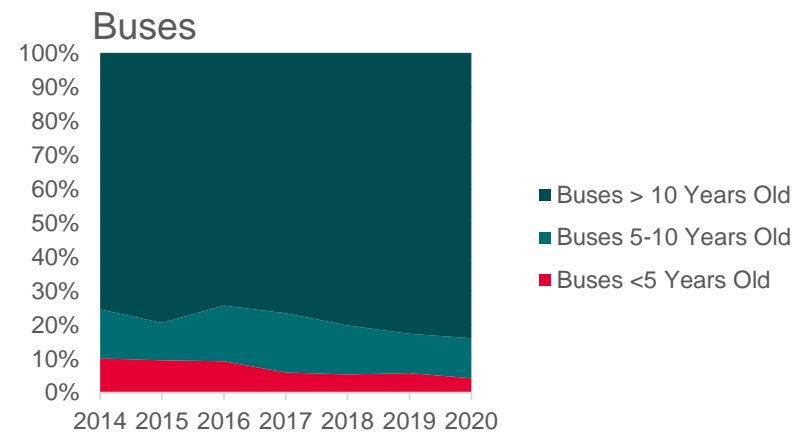
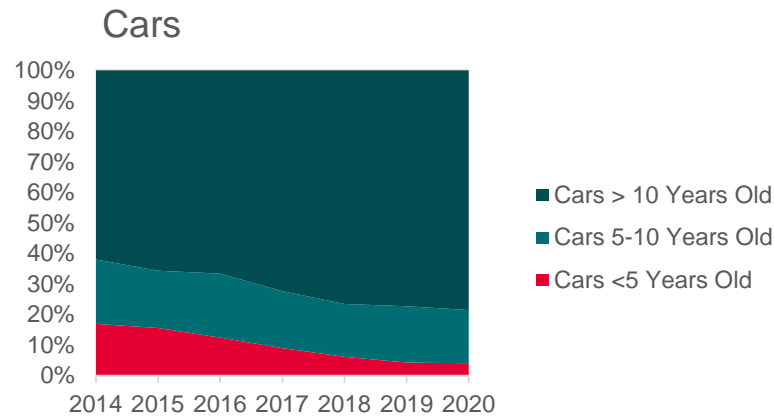


Quick Scan of Trends: Passenger Buses/1000 People

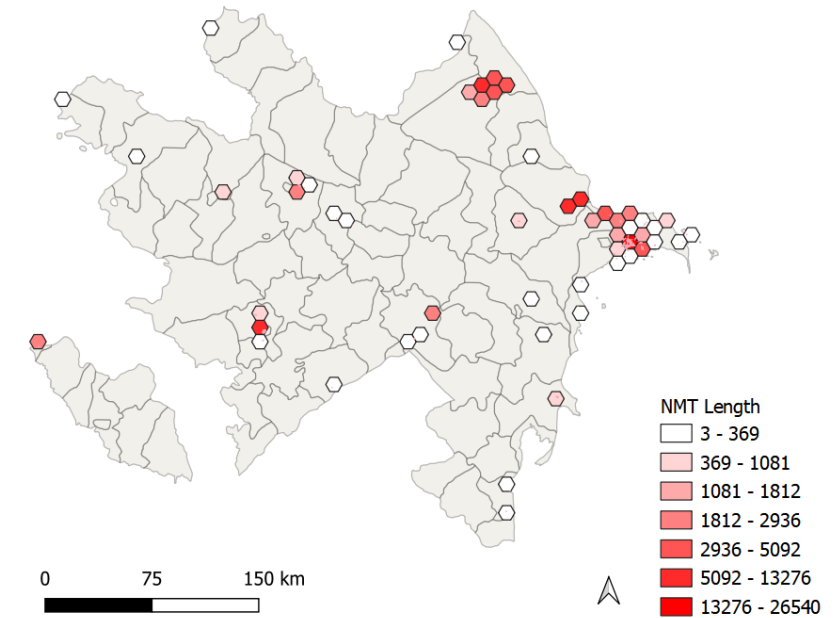
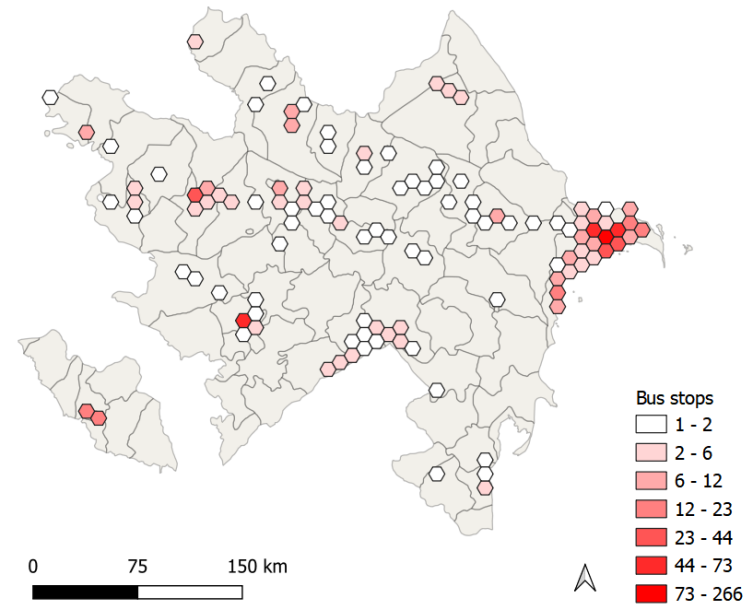
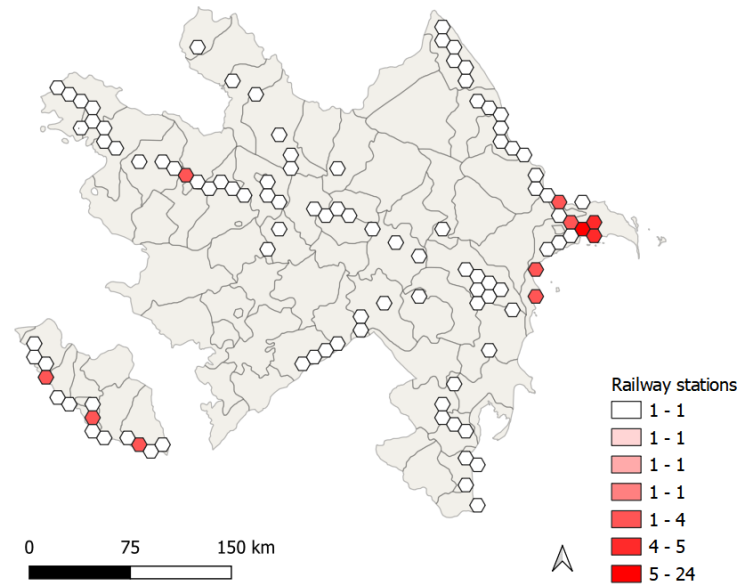


Source: Own visualisation using data from the AZstats

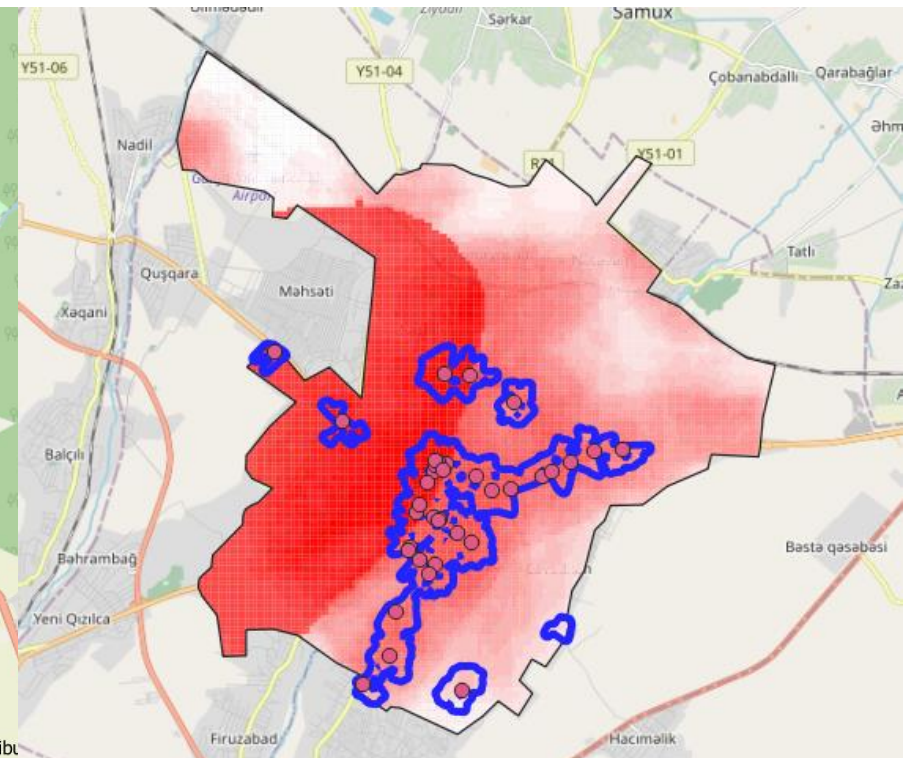
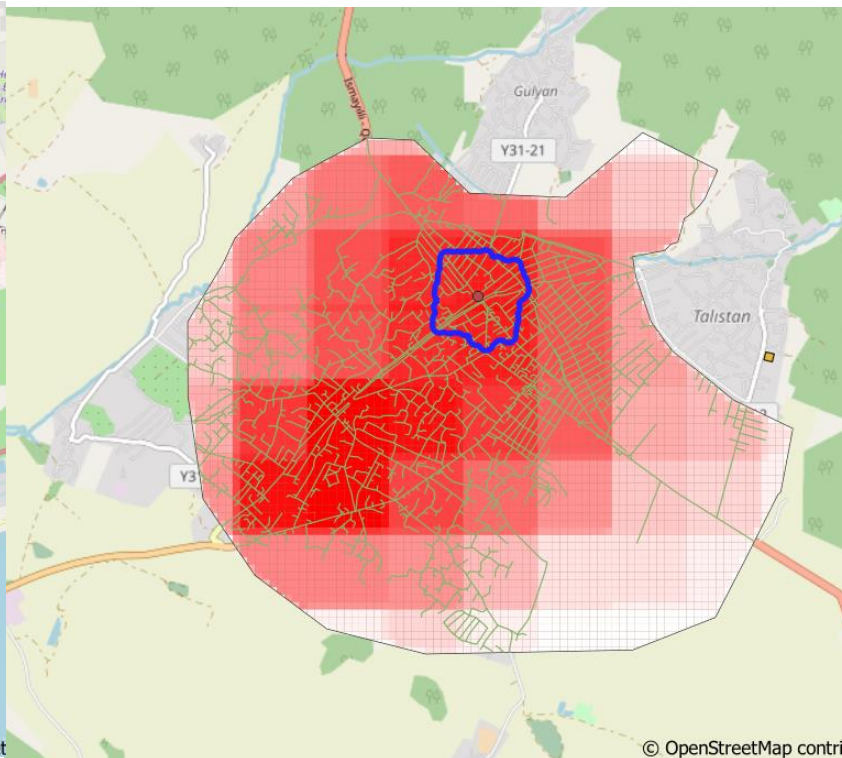
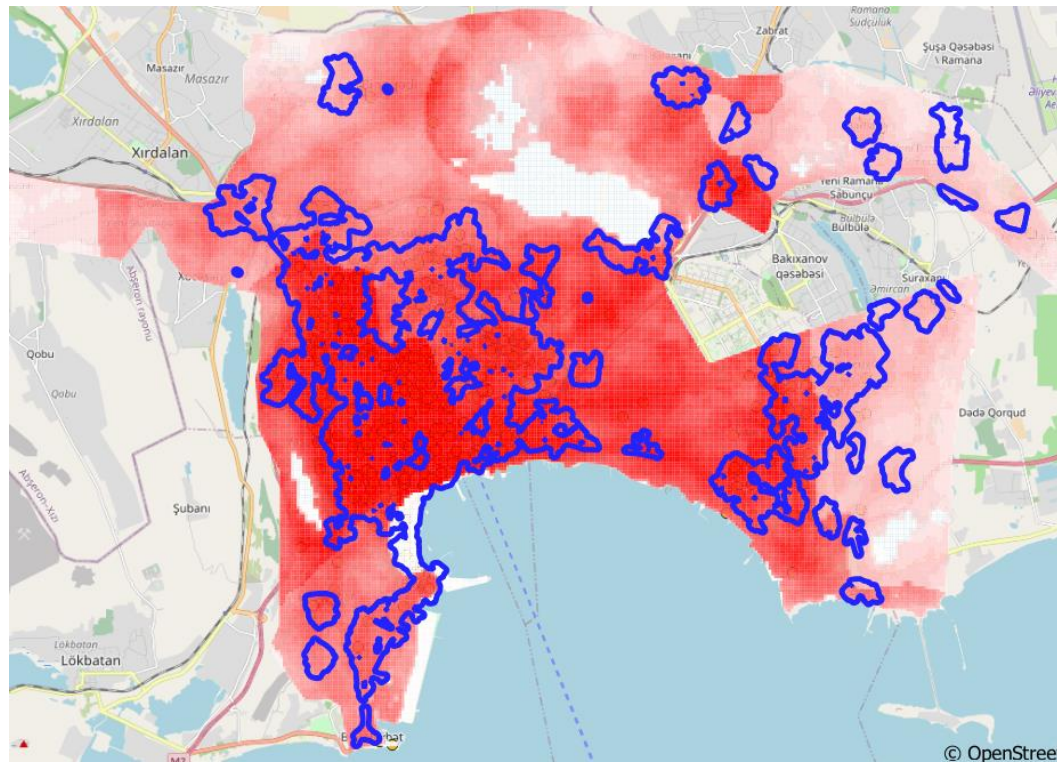
Other Notable Trends



Quick Scan of Trends: Infrastructure






Access to Public Transport



Quick Scan of the State of Responses at the Local Level

	Cities		
	A	B	C
Does the city have an urban mobility plan ?	None	None	Initiated
Does the mobility plan includes GHG reduction/ decarbonisation	None	None	Present
Does the city explicitly calculate GHG emissions from urban mobility	None	None	None
Is the city centre pedestrianised	Present	None	Initiated
Is there a walking strategy for the city?	None	None	Initiated
Are there specific targets for improving walking in the city?	None	None	Present
Is there a cycling strategy for the city?	Initiated	None	None
Does the city have a traffic control centre ?	None	None	Present
Is there a mobile phone app for the city transport system?	None	None	Initiated
Does your city have shared mobility options	None	Present	None
Does your city have e-mobility options	None	None	Present

None	
Initiated	
Present	

Source: Survey with partner cities

- Not to reinvent the wheel, but to bring together the efforts from various institutions
- Develop an e-learning activity so that the courses are available at a later stage at scale
- Work together with academic partners such that the content is also included embedded in the curriculum – long term strategy
- Bring experiences from other cities as visual case studies – videos from other cities documenting the transformation
- Prioritise data collection, storage and innovative methods of collecting data

Identified Capacity Building Themes

- Transit-oriented development
- Active mobility planning
- Options for financing sustainable transport
- Promoting electric mobility
- Mainly in the public transport and paratransit sectors
- Focussing not just on the vehicles but on the entire ecosystem
- Data collection methods to develop urban observatories

**Thank you very
much**

Alvin Mejia

on behalf of the Wuppertal Institute

Contact

Sunny Kodukula

Wuppertal Institute, Germany

santosh.kodukula@wupperinst.org